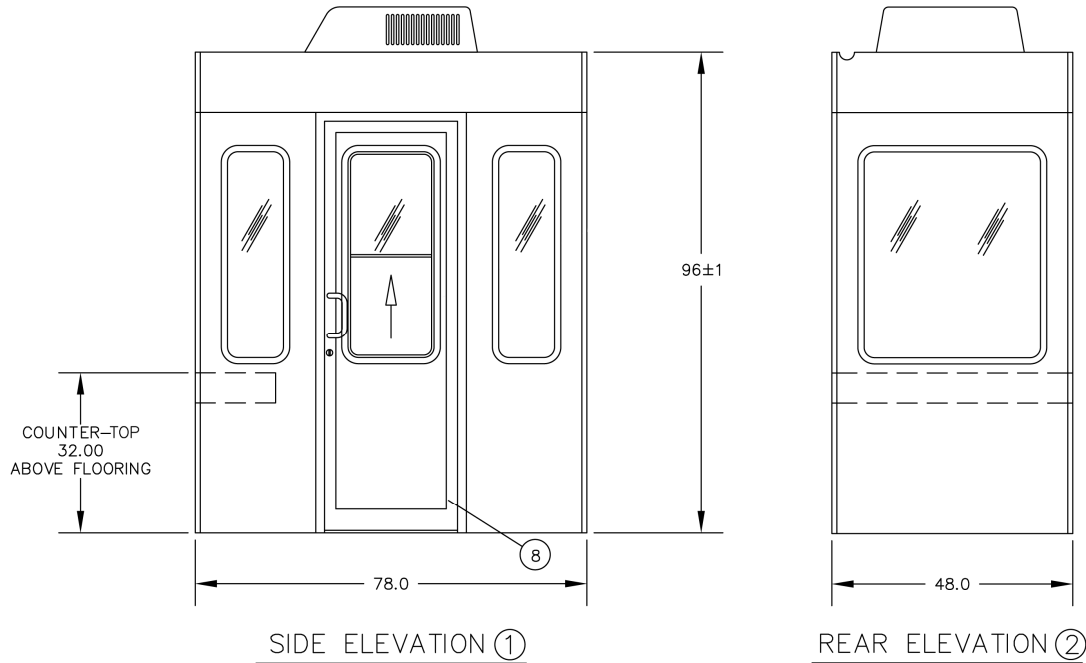


## **HYTECH PREFABRICATED MODULAR BOOTHS**



HyTech Booths are available in a wide variety of sizes in both oval and rectangular footprints.

### **TYPICAL OPTIONS**

- Rooftop 13,500 BTU HVAC
- Electric Wall Mounted Heater
- Vertical Raised Window w/Screen
- Aluminum Sliding Door
- Ticket Window w/pass through
- Telephone Mounting Panel
- Horizontal Sliding Window
- Speaker Tube in Window
- Custom Interior Counters

### **STANDARD FEATURES**

- Steel Reinforced FRP Wall Panels
- Smooth Exterior Gel Coat Finish
- Carpeted Interior Walls
- Resilient Rubber Flooring
- Aluminum Hinged Door w/Lock
- Scuff Resistant Polycarbonate Glazing
- 100 Amp Distribution Box
- Fluorescent Lighting w/Switch
- Counter w/Lockable Drawer