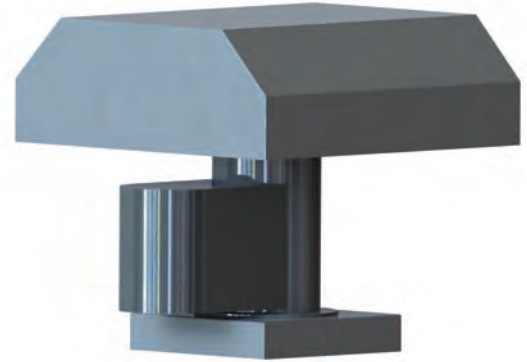


## INTRODUCING MODEL TAHD

### FIBERGLASS TUBE AXIAL HOODED FAN

#### ABOUT CFT

COMPOSITE FAN TECHNOLOGY MANUFACTURES A COMPLETE LINE OF FIBERGLASS FANS. CFT FANS ARE DESIGNED TO ACHIEVE MAXIMUM CORROSION RESISTANCE WHILE OFFERING RUGGED CONSTRUCTION, EASE OF MAINTENANCE AND EFFICIENT OPERATION.



#### STANDARD FEATURES:

- 13 SIZES AVAILABLE (12" TO 60" DIAMETER)
- CAPACITIES UP TO 90,000 CFM
- PRESSURES UP TO 2" W.G.
- SOLID FIBERGLASS HOUSING AND HIGHLY EFFICIENT FIXED PITCH AIRFOIL TYPE WHEEL CONSTRUCTED OUT OF PREMIUM CORROSION RESISTANT VINYL ESTER RESIN
- ALL RESIN IS FIRE RETARDANT WITH A CLASS 1 FLAME SPREAD OF 25 OR LESS PER ASTM E-84
- STANDARD HOUSING COLOR IS GRAY
- ALL EXTERIOR SURFACES CONTAIN UV INHIBITOR
- C-GLASS SURFACE VEIL ON AIRSTREAM SURFACES
- 316 SST SHAFT (BELT DRIVE ONLY) AND HARDWARE
- EPDM DOUBLE LIP SHAFT SEAL
- POLYETHELENE EXTENDED GREASE LINES
- HEAVY DUTY FLANGE MOUNT BEARINGS
- FIBERGLASS WEATHER COVER/GUARD
- ADJUSTABLE MOTOR PLATE FOR BELT TENSIONING
- TEFC MOTOR (1/3 HP MINIMUM)
- FIBERGLASS HOOD AND CURB CAP

#### OPTIONAL ACCESSORIES

STATIC GROUNDING OF AIRSTREAM, DISCONNECT SWITCHES (FACTORY MOUNTED), INLET/OUTLET GUARDS, EXOTIC SHAFT MATERIAL AND OR HARDWARE AVAILABLE, CUSTOM COLORS, SYNTHETIC SURFACE VEIL, INLET/OUTLET TRANSITIONS, AND CUSTOM RESIN FORMULATIONS ARE AVAILABLE.

