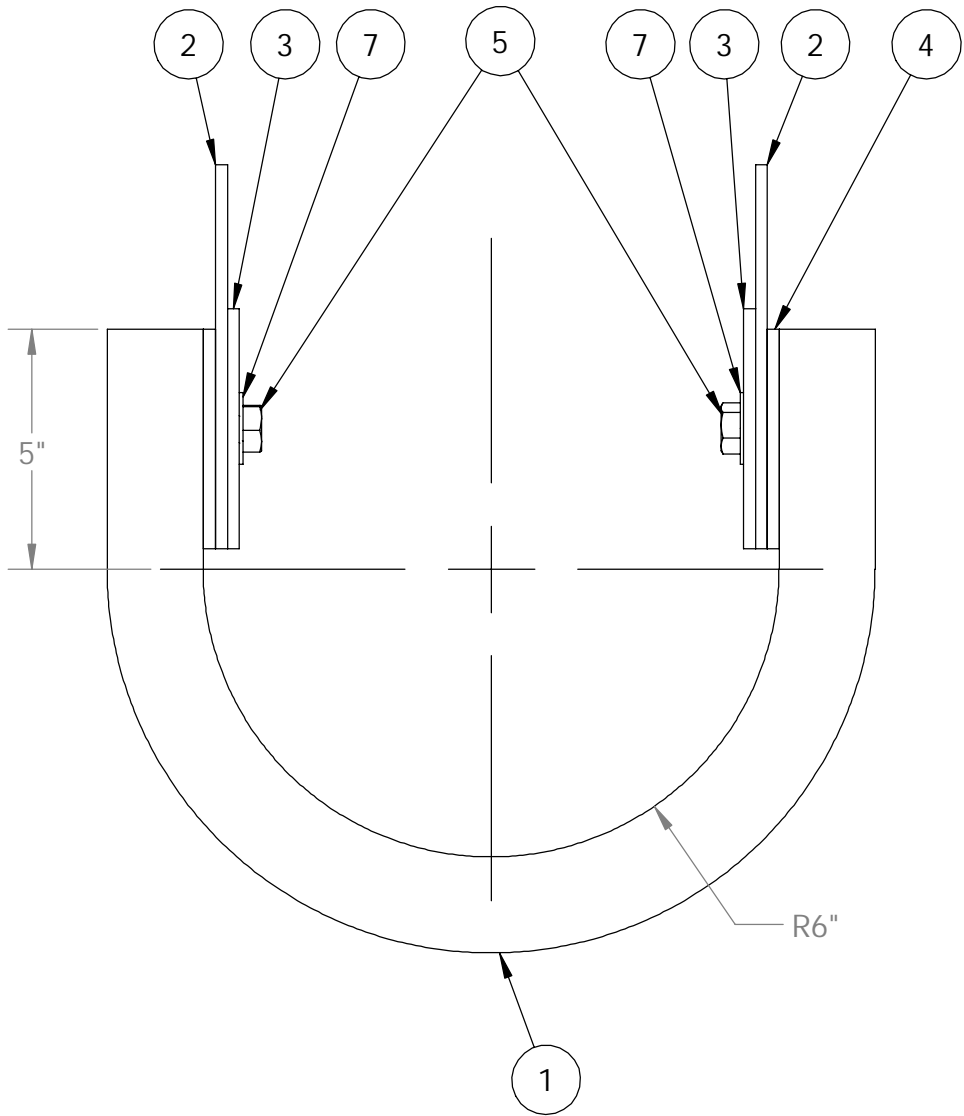
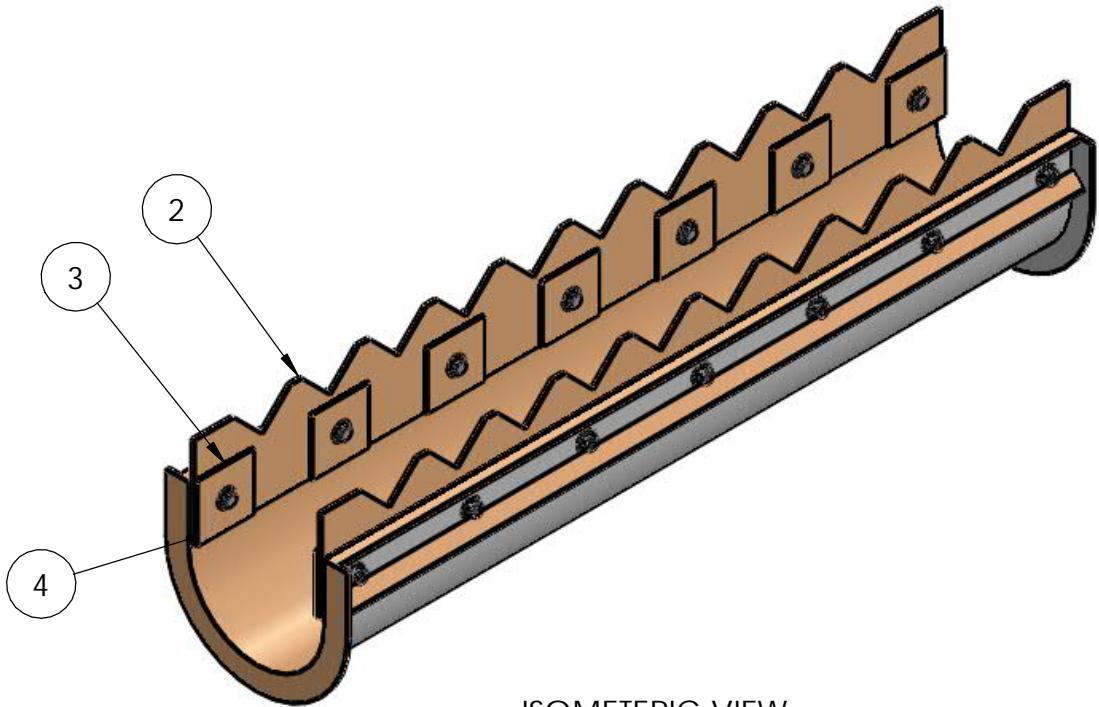


ITEM NO.	DESCRIPTION	QTY.
1	12" Wide x 5'-6" Long Trough	1
2	1/4" THICK "V" NOTCH WEIR PLATE	2
3	5" X 1/4" FRP WASHER	14
4	1/4" THICK NEOPRENE RUBBER GASKET	2
5	5/8" X 1-1/2" HCS - 316 SS	14
6	5/8" - 11 HEX NUT - 316 SS	14
7	5/8" WASHER - 316 SS	28




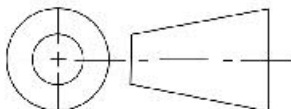
END VIEW

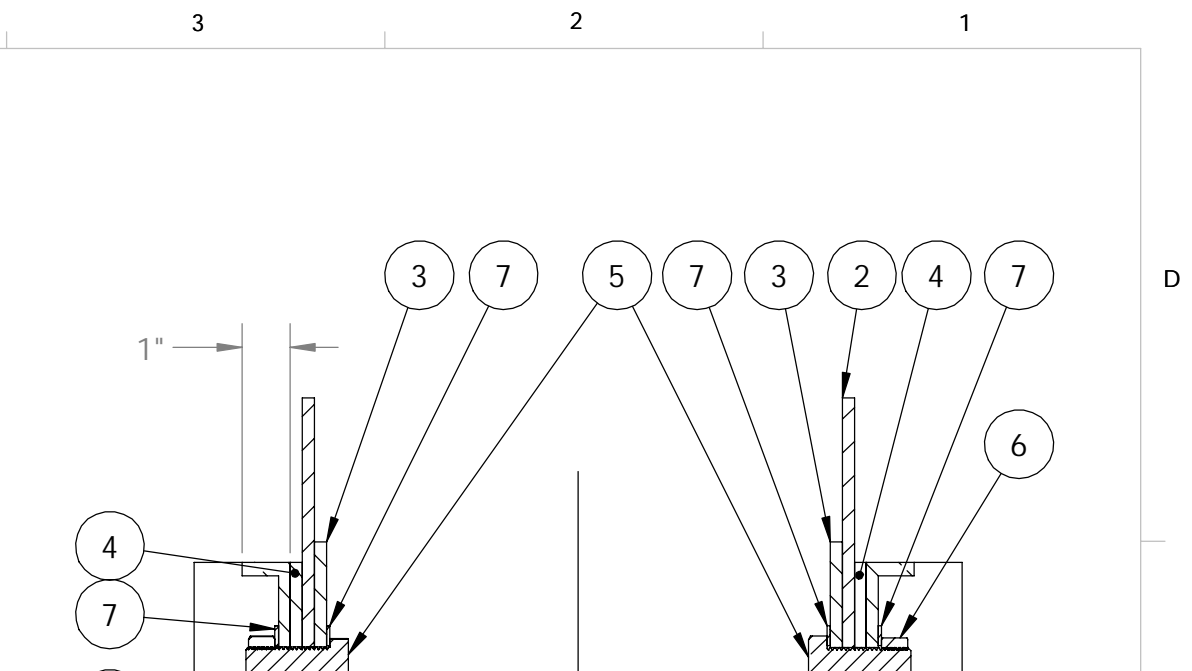


ISOMETERIC VIEW

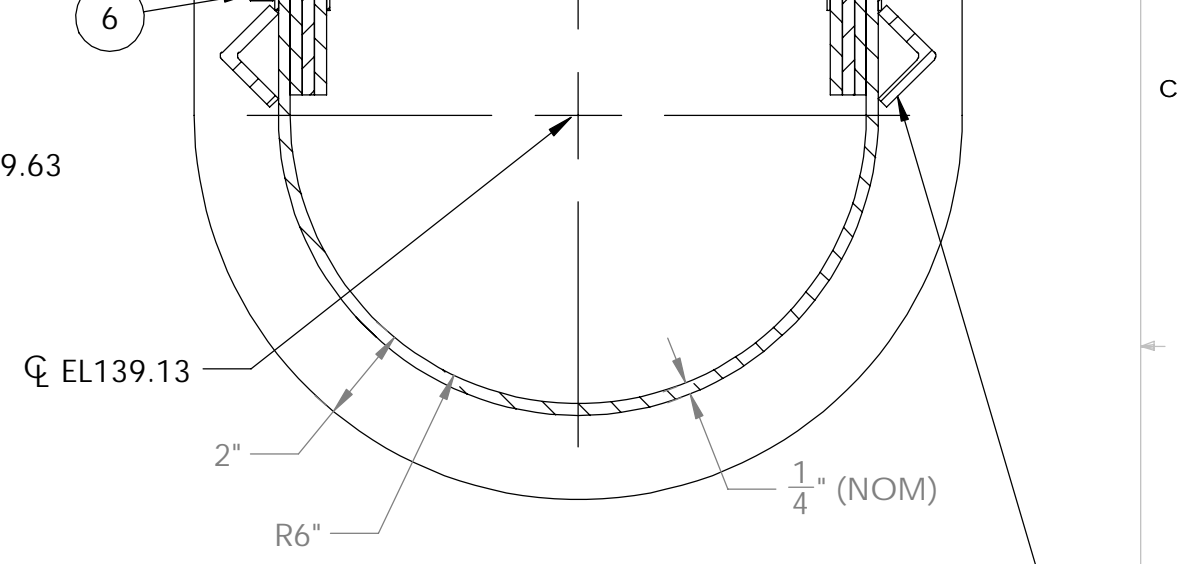
- NOTES:
- 1) INTERIOR OF TROUGH GEL COAT COLOR TO BE BEIGE.
  - 2) EXTERIOR OF TROUGH GEL COAT COLOR TO BE WHITE.
  - 3) TROUGH QTY REQ'D = 12.
  - 4) WEIR PLATE QTY REQ'D = 24.
  - 5) SUPPORTING STRUCTURE PROVIDED BY OTHERS.

PROPRIETARY AND CONFIDENTIAL  
THE INFORMATION CONTAINED IN THIS  
DRAWING IS THE SOLE PROPERTY OF  
VIRTUAL POLYMER COMPOUNDS, LLC. ANY  
REPRODUCTION IN PART OR AS A WHOLE  
WITHOUT THE WRITTEN PERMISSION OF  
VIRTUAL POLYMER COMPOUNDS, LLC IS  
PROHIBITED.

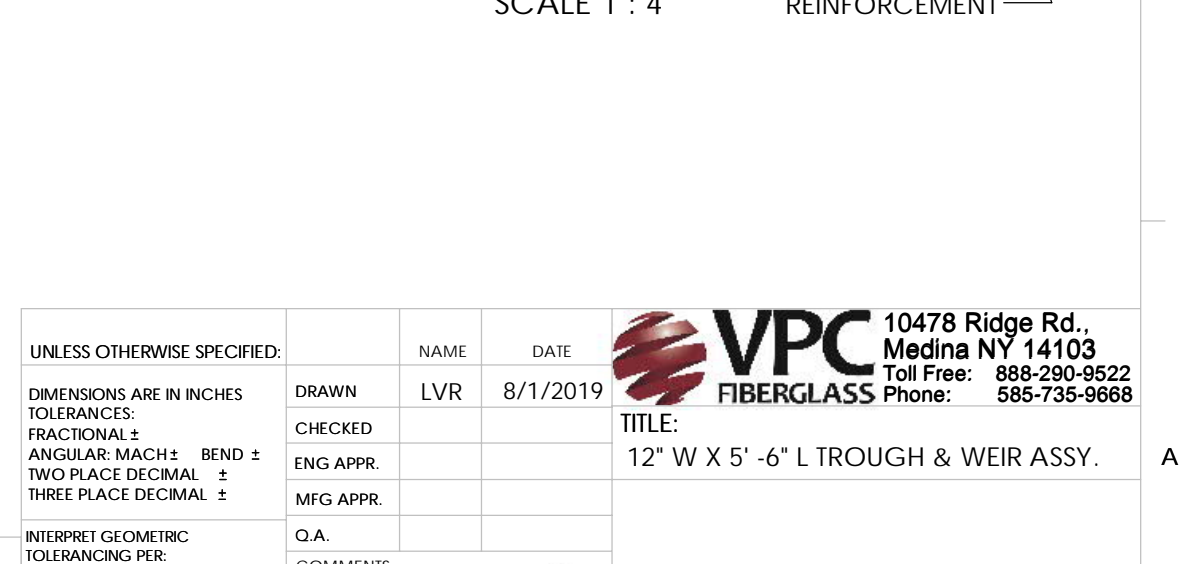
UNLESS OTHERWISE SPECIFIED:		NAME	DATE	 <div>10478 Ridge Rd., Medina NY 14103 Toll Free: 888-290-9522 Phone: 585-735-9668</div>		
DIMENSIONS ARE IN INCHES TOLERANCES: FRACTIONAL ± ANGULAR: MACH ±    BEND ± TWO PLACE DECIMAL ± THREE PLACE DECIMAL ±	DRAWN	LVR	8/1/2019			
	CHECKED			TITLE:		
	ENG APPR.			12" W X 5' -6" L TROUGH & WEIR ASSY.		
	MFG APPR.					
INTERPRET GEOMETRIC TOLERANCING PER:	Q.A.					
MATERIAL POLYESTER RESIN				SIZE	DWG. NO.	REV
FINISH				B	50001	A
DO NOT SCALE DRAWING	3rd ANGLE PROJECTION			SCALE: 1:5	Weight 60.05	SHEET 1 OF 5




SECTION A-A  
SCALE 1 : 4



## ANGLE REINFORCEMENT —



COMMENTS:



3rd ANGLE PROJECTION

 **VPC**  
FIBERGLASS

10478 Ridge Rd.,  
Medina NY 14103  
Toll Free: 888-290-9522  
Phone: 585-735-9668

SIZE B	DWG. NO. 50001	REV A
-----------	-------------------	----------

SCALE: 1:16	Weight 60.05	SHEET 2 OF 5
-------------	--------------	--------------

