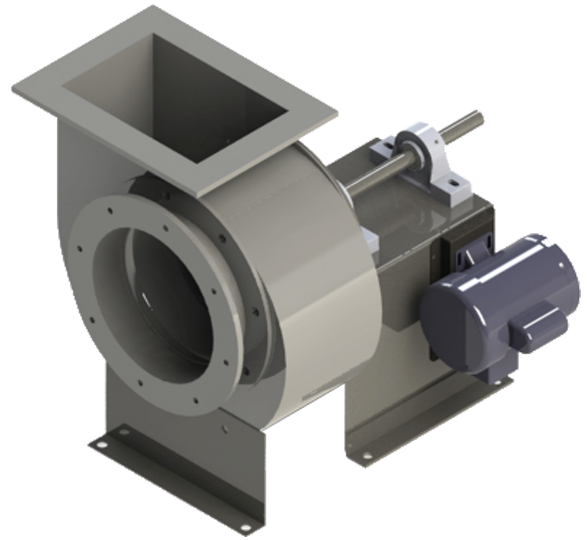


INTRODUCING MODEL BIC

FIBERGLASS BACKWARD INCLINED CENTRIFUGAL FAN

ABOUT CFT

COMPOSITE FAN TECHNOLOGY MANUFACTURES A COMPLETE LINE OF FIBERGLASS FANS. CFT FANS ARE DESIGNED TO ACHIEVE MAXIMUM CORROSION RESISTANCE WHILE OFFERING RUGGED CONSTRUCTION, EASE OF MAINTENANCE AND EFFICIENT OPERATION.



STANDARD FEATURES:

- 16 SIZES AVAILABLE (12" TO 66")
- CAPACITIES UP TO 90,000 CFM
- PRESSURES UP TO 10" W.G.
- SOLID FIBERGLASS HOUSING AND HIGHLY EFFICIENT BACKWARD CURVED IMPELLER CONSTRUCTED OUT OF PREMIUM CORROSION RESISTANT VINYL ESTER RESIN.
- ALL RESIN IS FIRE RETARDANT WITH A CLASS 1 FLAME SPREAD OF 25 OR LESS PER ASTM E-84.
- AVAILABLE COLOR IS GRAY
- ALL EXTERIOR SURFACES CONTAIN UV INHIBITOR
- C-GLASS SURFACE VEIL ON AIRSTREAM SURFACES
- 316 SST SHAFT (BELT DRIVE ONLY) AND HARDWARE
- EPDM DOUBLE LIP SHAFT SEAL
- 1" NPT DRAIN AT LOW POINT
- HEAVY DUTY PILLOW BLOCK BEARINGS
- GALVANIZED BELT AND SHAFT GUARDS
- V-BELT DRIVE WITH 1.5 S.F. MINIMUM
- TEFC MOTOR (1/3 HP MINIMUM)
- AVAILABLE IN ARR 1, 4, 8, 9, & 10

OPTIONAL ACCESSORIES

STATIC GROUNDING OF AIRSTREAM, DISCONNECT SWITCHES, CHANNEL BASE, VIBRATION ISOLATORS, ACCESS DOOR, FRP WEATHER COVERS, HOUSING SPLIT, INLET/OUTLET GUARDS, EXOTIC SHAFT MATERIAL AND OR HARDWARE AVAILABLE, CUSTOM COLORS, SYNTHETIC SURFACE VEIL, INLET/OUTLET TRANSITIONS, AND CUSTOM RESIN FORMULATIONS ARE AVAILABLE.



A Division of VPC Fiberglass

VPCFIBERGLASS.COM

P: 585.735.9668

E: info@vpcfiberglass.com

ADMINISTRATIVE OFFICES

2410 North Forest Road, Suite 301
Getzville, NY 14068

LOCKPORT MANUFACTURING

75 Michigan Street, Suite 2
Lockport, NY 14094

MEDINA MANUFACTURING

10478 Ridge Road
Medina, NY 14103

