



VPC FIBERGLASS

WWW.VPCFIBERGLASS.COM

FIBERGLASS SOLUTIONS

TAILORED SOLUTIONS FOR CONQUERING CORROSIVE CHALLENGES
IN WATER, WASTEWATER, AND INDUSTRIAL APPLICATIONS

SALES SHEETS

2025

DIVISIONS OF VPC FIBERGLASS

COMPOSITE FAN TECHNOLOGY

PRIMARY PLASTICS

EASY REC

INTERACTIVE PLAY WATERPARKS

P: 585.735.9668

F: 585.735.9965

ADMINISTRATIVE OFFICES

2410 North Forest Road
Getzville, NY 14068

MEDINA MANUFACTURING

10478 Ridge Road
Medina, NY 14103

LOCKPORT MANUFACTURING

222 South Niagara Street
Lockport, NY 14094

info@vpcfiberglass.com

VIEW CATALOG



About VPC

We supply high-quality fiberglass products, such as shelters, flumes, manholes, fans, ducts, and more, to the industrial and municipal water and wastewater markets. In addition, VPC Fiberglass owns several sub-brands that supply recreation and water park industry products.

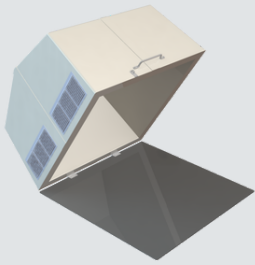
Get to know our innovative fiberglass solutions!

Product Categories

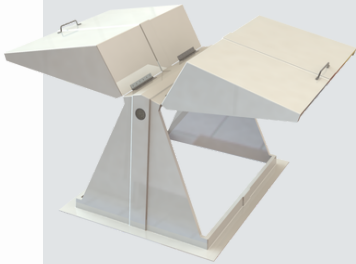
- **Shelters**
- **Custom Fiberglass Buildings**
- **Flumes**
- **Metering Manholes**
- **FRP Fans**
- **Duct**
- **Traffic Rated Manhole Covers**
- **Custom Manhole Covers**
- **City of Wichita Case Study**
- **Troughs, Weirs + Baffles**
- **Fiberglass Tanks**
- **EcoTech + HyTech Booths**
- **Ladders, Platforms + Railings**
- **Staff Gauges**



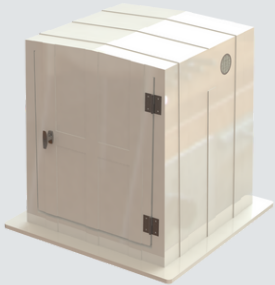
Fiberglass Shelters



ENDURO 429
Tilt Back



ENDURO 400GX
Gull Wing



ENDURO 50
Hinged Door



ENDURO 100
Hinged Top



ENDURO LINE + CUSTOM FABRICATED SHELTERS

Our Enduro shelters, ranging from 29" x 29" to 72" x 72", provide robust protection for various equipment in challenging environments. Our on-staff design team can customize fiberglass enclosures to meet specific needs when the standard line isn't the ideal fit.

Models:

- VPC-M50
- VPC-M100
- VPC-M150
- VPC-M1630
- VPC-M200
- VPC-M300
- VPC-M400
- VPC-M400D
- VPC-M400G
- VPC-M400GX
- VPC-M429
- VPC-M433
- VPC-M5427
- VPC-M600



FEATURES:

- Insulated
- Maintenance-Free
- Corrosion- Resistant
- Fully Assembled
- Weatherproof
- Single-Piece Construction
- 130 MPH Wind Load
- 40 PSF Snow Load
- Variety of Sizes
- In Stock & Ready to Ship



Custom Fiberglass Buildings

UNYIELDING STRENGTH, UNMATCHED VERSATILITY: CUSTOM FIBERGLASS BUILDINGS ENGINEERED TO THRIVE IN ANY ENVIRONMENT

Our Custom Buildings have been used to house large generators, power equipment, radar equipment, telecommunications gear, and a variety of instrumentation, to name just a few applications. Whenever chemical and environmental challenges are present, our experienced team and state-of-the-art technology can provide you with a product to meet your specific needs.

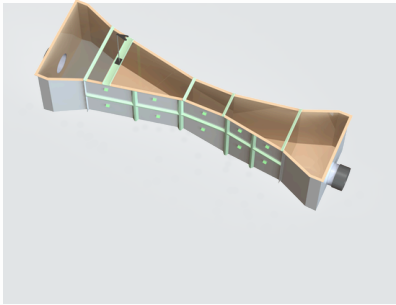
VPC is proud to count among its many customers the US Coast Guard, US Navy, Proctor & Gamble, DuPont, and Chevron. Our design team will work with you to make sure the result is a cost-effective and functional shelter that meets your unique needs. Our engineering staff will provide technical drawings and specifications, and our experienced fabricators will turn your design into a reality. We couple our collaborative design process with exceptional customer service, making sure VPC delivers the right solution for you.

Applications

- Packaged Pump Skid Cover
- Maintenance Equipment Shed
- Phosphorus Removal Shelter
- Equipment Building
- Communications Shelters
- Noise Reduction Shelters
- Well Head Cover
- Pump Cover
- Chemical Feed Pump Shelter
- Water Pump Cover
- In-Ground Vault
- Driver Relief Station



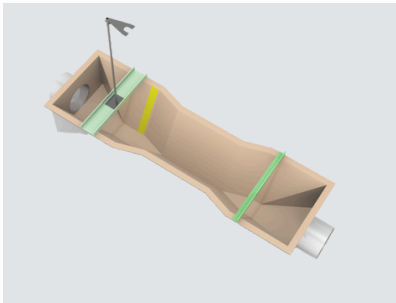
Fiberglass Flumes



PARSHALL FLUME

Throat Widths: From 1 inch -120 inch

Used to measure the flow in open channels and non-pressurized pipelines. The flumes are often used in industrial process discharge, sanitary and storm sewer discharge, and irrigation and agricultural runoff.



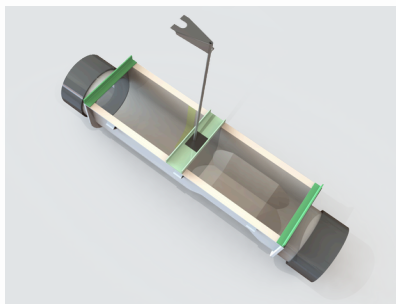
TRAPEZOIDAL FLUME

Small - Extra Large

Commonly used in unpressurized open channels or pipelines.

Characteristics:

- Flat bottom for efficient head conversion.
- Operate without the need for free-fall discharge.
- Flume includes staff gauge and instrument mounting brackets.
- Mimics the natural shape of earthen and concrete-lined ditches.
- Solids can pass through the throat without being trapped due to the flat floor and sloping wall.



PALMER BOWLUS FLUME

Size: From 4 inches - 48 inches

The Palmer Bowlus metering flume is widely used in open channels or pipelines that are not under any pressure.

Characteristics

- Low Head Loss
- Minimum flow restriction
- Measurement accuracy



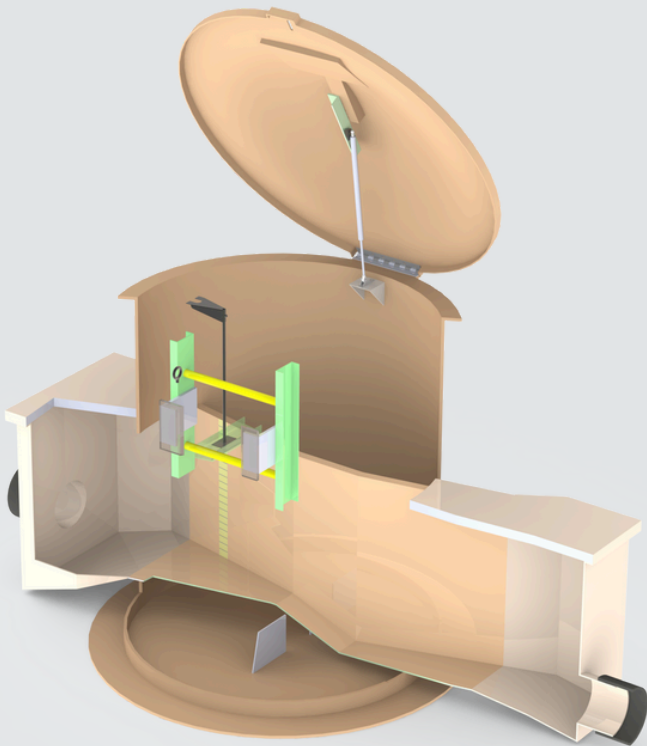
H/HS FLUMES

Size: From .50 ft to 4 ft

H flumes, initially designed for agricultural water runoff, feature a "V" shape, enabling measurement across a broad flow range. Common applications include measuring irrigation water, snow melt, holding pond overflow, industrial process discharge, and sanitary/storm sewer discharge.



Metering Manholes



FEATURES:

- Lightweight
- Maintenance-free
- Strong, durable design
- One-piece construction
- Manufactured in any diameter or depth
- Leakproof
- H-20 traffic rate
- Fully assembled
- Easy to install
- Variety of cover options



MANHOLE SYSTEMS

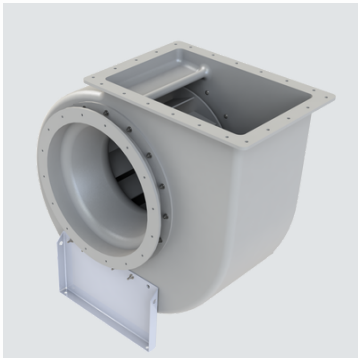
Our metering manholes, integral to a comprehensive flow monitoring system, come ready to install with a fiberglass ladder, floor, and two-inch NPT coupling. The one-piece design ensures no leaks, eliminating site infiltration for a long and maintenance-free life.

These lightweight fiberglass manholes (48-inch or 60-inch diameter) allow easy installation with minimal equipment and labor. Custom sizes are available, and standard manholes can have a hinged fiberglass cover or an H-20 adapter. In traffic areas, a traffic-rated fiberglass manhole frame and cover are offered, which can be packaged with a flow meter for a complete project solution.

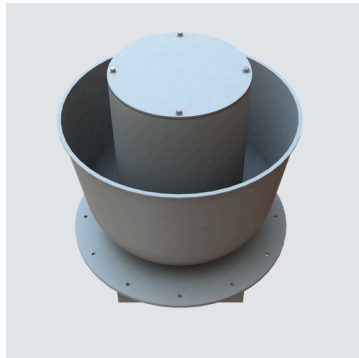
- **GRINDER MANHOLE SYSTEM**
- **OPEN CHANNEL FLOW METERING MANHOLE SYSTEM**
- **MAG METER MANHOLE SYSTEM**



Fiberglass Fans



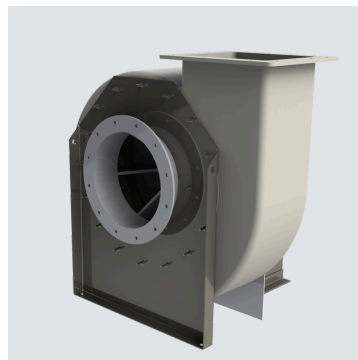
**BACKWARD INCLINED
CENTRIFUGAL**



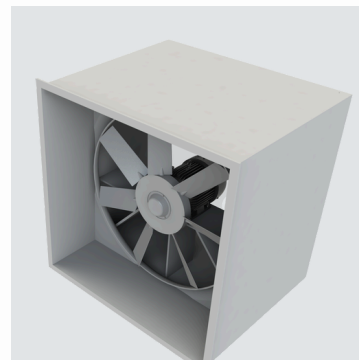
**UPBLAST
CENTRIFUGAL**



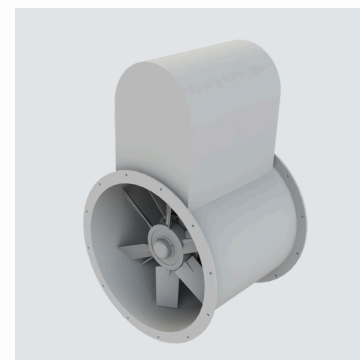
**INLINE
CENTRIFUGAL**



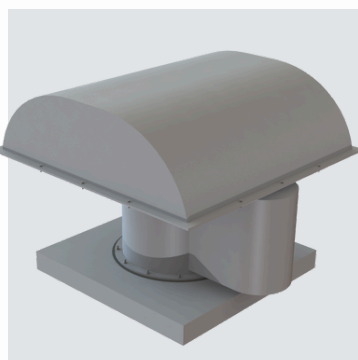
**RADIAL BLADE
CENTRIFUGAL**



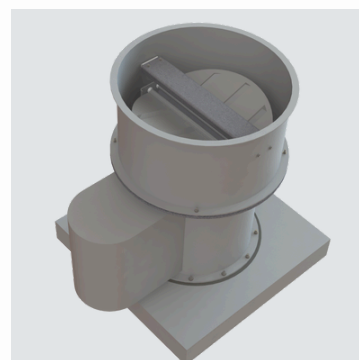
WALL BOX



TUBE AXIAL



TUBE AXIAL HOODED



TUBE AXIAL UPBLAST

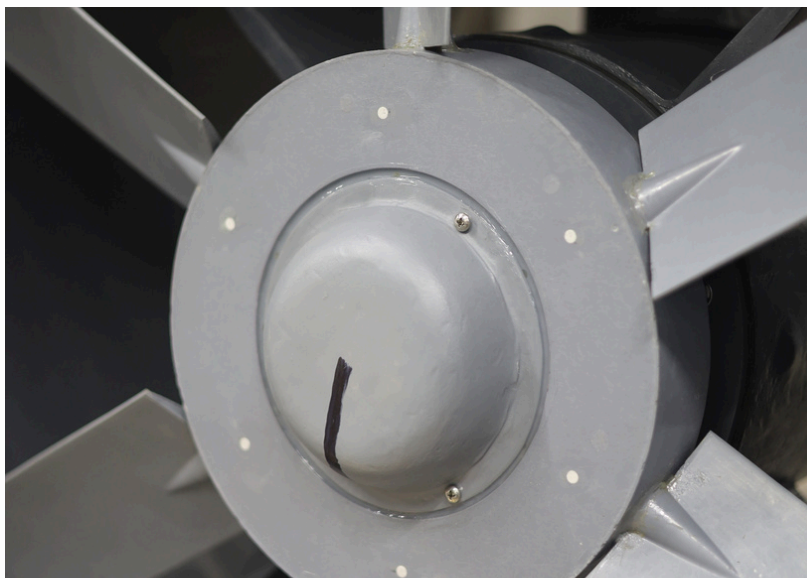


LOUVERS & DAMPERS



FEATURES:

Our fans are designed to achieve maximum corrosion resistance while offering rugged construction, ease of maintenance, and efficient operation. Fans are offered in a variety of shapes and sizes and are ideal in the chemical processing, pulp and paper, and fertilizer industries, as well as water and wastewater treatment applications.



Fiberglass Duct

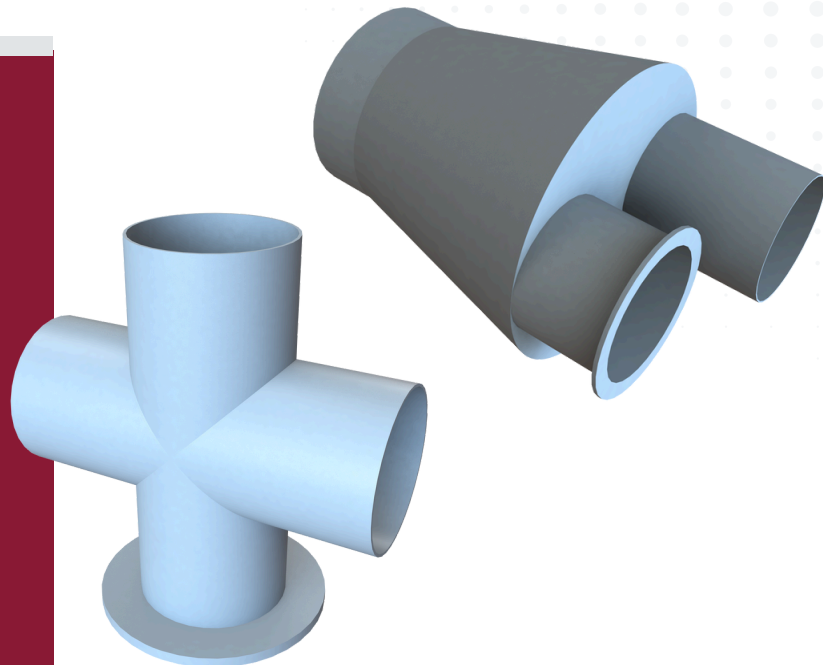


Fiberglass ductwork is designed to handle a variety of corrosive and pressure requirements. Our VPC duct is manufactured using a filament-wound process and is built according to SMACNA standards. Standard tooling up to 72" diameter allows for quick production turnaround.

FRP ductwork can be customized to meet your requirements. Our engineering team will work closely with you to help select your system's proper components and materials.

Duct Fittings:

- Round Duct
- Tees
- Round Dampers
- Y Branches
- Hoods
- Elbows
- Crosses
- Square Dampers
- Concentric Reducers
- Eccentric Reducers



CORROSION-RESISTANT, HIGH-STRENGTH,
CLASS 1 UNDERGROUND HVAC DUCT

GroundGuard

VPC's Underground FRP Duct



OVERVIEW

VPC Fiberglass offers an underground duct system designed with corrosion-resistant, high-strength FRP. Built to withstand harsh environments, **GroundGuard** provides a durable and efficient solution for air distribution in demanding settings. GroundGuard is approved for direct burial.

KEY FEATURES

Corrosion Resistance

Engineered to endure moisture, chemicals, and harsh conditions, making it ideal for applications such as wastewater and industrial facilities, and other applications like labs and pools.

High Strength

Constructed with reinforced fiberglass, offering superior durability while remaining easy to install.

Class 1 Fire Rating

Meets NFPA 90 standards for flame spread, ensuring safety in critical environments. Smoke rating can also be met as required.

Efficient Airflow

The smooth interior surface minimizes pressure drop, enhancing overall system performance.

Versatile Design

Available in single-wall and double-wall configurations, with custom shapes to meet project specifications.

Easy Installation

Designed for direct burial without the need for concrete encasement, reducing installation time and costs.



SINGLE-WALL DUCT

VPC Fiberglass' Class 1-rated single-wall duct can meet ASTM E-84 25/50 flame and smoke requirements, approved for wastewater and industrial applications.



DOUBLE-WALL DUCT

VPC Fiberglass' Class 1-rated double-wall duct reduces thermal losses. With standard 1" insulation, it offers a minimum R-value of 6. Other options are available.

OUR EXPERT
ENGINEERS ARE HERE
TO PROVIDE A
DETAILED QUOTE
**FOR YOUR CUSTOM
FRP DUCT PROJECT.**

Visit our website to
request a custom quote.

www.vpcfiberglass.com

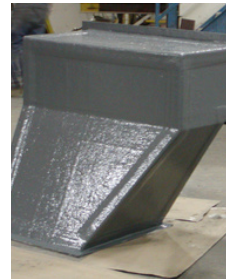
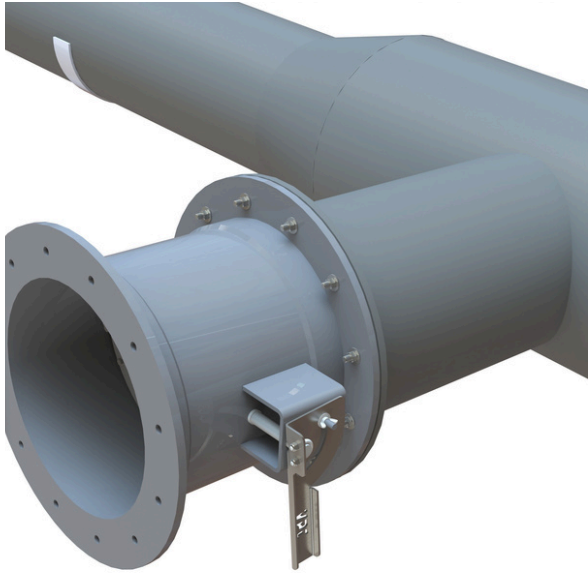
(585) 735-9668

10478 Ridge Rd, Medina, NY 14103

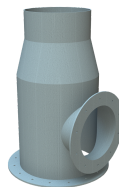
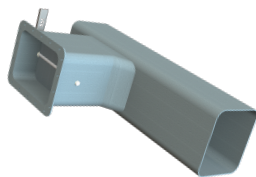
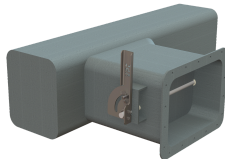
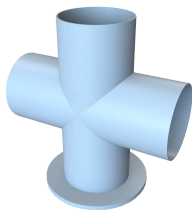


FRP CONFIGURATION

Round and rectangular are the standard shapes for filament-wound construction at VPC Fiberglass. Upon request, custom shapes can be accommodated. Our experienced team is available to design projects that require non-standard construction.



OUR FRP DUCT



- **Corrosion & Pressure Resistant:** Designed for harsh environments and static pressure.
- **Precision Manufacturing:** Filament-wound process meets SMACNA standards.
- **Best in Industry Lead Times**
- **Size Range:** Standard sizes 2" to 72" diameter.
- **Versatile Applications:** Suitable for industrial & commercial use.
- **Custom Options:** Configurable to project needs.
- **Expert Support:** Engineering assistance for material & component selection.

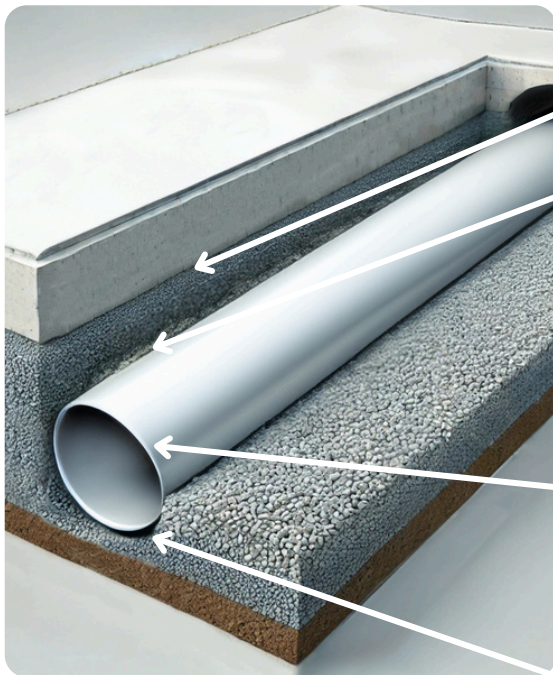
INSTALLATION, BURIAL GUIDELINES

VPC Fiberglass' **GroundGuard** product should be installed in a graded trench with proper drainage, supported by a 4" bed of pea gravel. A minimum of 4" of compacted fill is required between the top of the duct and the slab, with a recommended maximum of 6". If deeper burial is necessary, the duct can be custom-designed to accommodate it.

Concrete encasement is not required for round **GroundGuard**. Once fiberglass is securely installed and sealed, simply cover the duct with recommended fill or pea gravel and proceed with pouring the floor slab.

Our duct is constructed with a resin-rich veil on the interior and exterior to resist water infiltration in areas prone to groundwater exposure. Field joints should be sealed using the wet lay-up method as specified in our installation guidelines.

(Note: A leak test should be conducted before backfilling.)



FRP can be designed for burial to any depth without concrete encasement.

4" Minimum Distance

Between duct and bottom of slab.

Positioning

Duct should be positioned at a 1% slope towards the largest diameter.

Minimum Fill

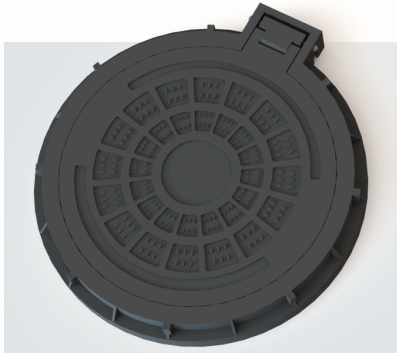
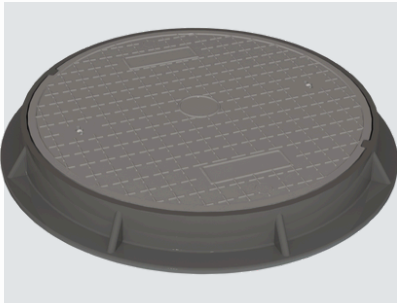
Thickness of 4" around all duct.

Minimum Trench

Width must be 1.5x diameter of duct to be laid.

Traffic Rated Covers

LIGHTWEIGHT • EASY TO INSTALL • NO SCRAP VALUE • NON-SKID SURFACE • DURABLE



TRAFFIC-RATED LOCKABLE MANHOLE COVERS

Opening Clearance Radius: From 24 inches to 34 inches

The VPC Fiberglass Manhole Cover Series is a premium alternative to heavy cast iron manhole frames and covers at an affordable cost.

This unit is nonconductive, non-corrosive and is ideal for use in even the harshest environment. UV stable, the finish will not flake or crack, and has a minimum lifespan of 30 maintenance-free years.

MODELS: VARIOUS SIZES WITH HINGED OPTIONS.

VPC-2000

VPC-2400

VPC-2600

VPC-3000

VPC-3200

VPC-3800

VPC-4000



FIBRELITE INDUSTRIAL MANHOLE COVERS

Size: From 12 inches to 55 inches

VPC Fiberglass distributes Fibrelite Covers—lightweight, watertight, and easily removable. Ideal for sewage systems, drainage networks, electrical junction boxes, and water treatment plants. With quick turnaround times, chemically inert composition, and a patented monolithic structure, these covers are guaranteed for 3 years, ensuring durability without cracking or delaminating.

MODELS: VARIOUS SIZES AND SHAPES.

VISIT WEBSITE FOR ALL MODELS



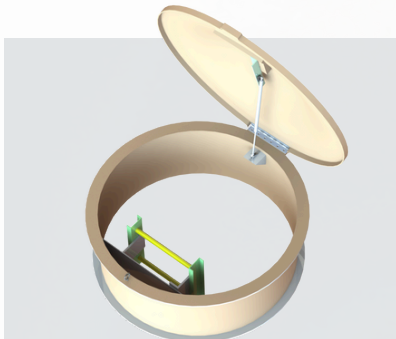
Custom Manhole Covers

MADE TO MEET THE SPECIFICATIONS OF YOUR APPLICATION

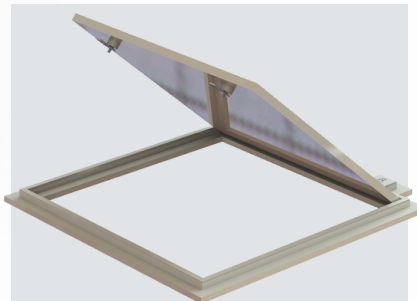
VPC offers a wide variety of manhole, vault, basin, and wet well covers. These covers are lightweight compared to a cast iron cover, greatly reducing the risk of injury when handling the cover.

Our custom covers are rated for pedestrian traffic and durable enough to withstand even the most corrosive environments. Options such as slip-resistant, non-skid surfaces, safety colors, recessed handles, or finger pulls and locks are available. With numerous application processes, VPC has provided custom covers for all industries, including retail, educational institutions, municipalities, and more.

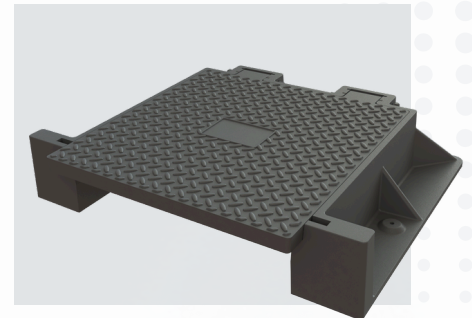
Manhole risers can be customized for changes to grade or snowy conditions, which makes manholes difficult to locate. These risers are shipped complete with locking covers.



MANHOLE RISER



CUSTOM COVER



STORM DRAIN COVER

FEATURES:

- Lightweight & easy to install
- Non-conductive
- Lockable
- Non-skid surface
- No scrap value or theft issues
- Watertight
- Customizable with logo

[READ OUR CASE STUDY](#)





Fiberglass Storm Drain Covers

CASE STUDY • CITY OF WICHITA, KS

Introduction

VPC's relationship with the City of Wichita, KS, began in 2017 with the installation of several of VPC's Traffic Rated Fiberglass Manhole Covers. The following year, Wichita contacted VPC to help develop a solution for a severe problem they were facing with the constant theft of two distinct sizes of storm drain frames and covers. VPC provided a solution and solved the problem for Wichita with Fiberglass. VPC designed a custom FRP storm drain frame and cover. The frameset was designed to be installed behind curbs on existing roadways throughout the city.



The team at VPC is an invaluable partner who took the time to understand my exact needs before they tried to sell me anything. The engineering team patiently listened, designed, and manufactured the exact drainage solutions I was searching for to solve a host of issues we were experiencing with the older, heavier cast iron covers. I am more than happy to share my experience with any of VPC's customers who want additional insights.

DARRIN DEUTSCHER

Supervisor, Stormwater Management Wichita, KS

Municipal Challenges - Cast Iron Lids

City Operators were running into several challenges with the existing covers:

- 1 **Theft:**
The city was consistently replacing lids that had been stolen for their scrap value, costing hundreds of thousands of dollars every year.
- 2 **Operator Safety:**
Cast-iron lids are extremely heavy and awkward to handle and can become a safety issue for operators cleaning and inspecting the basins. Injuries occur annually and are often attributed to lifting heavy covers during an inspection. This results in increased workers comp premiums and increased liability. Cast iron lids are significantly heavier than their fiberglass counterparts, in some cases hundreds of pounds more.
- 3 **Pedestrian Safety:**
The city was liable for public safety issues that occurred due to theft. Missing covers became a severe safety hazard for drivers and pedestrians alike, leaving large open storm drains on public roadways.
- 4 **Maintenance:**
Given the total area the city is responsible for, corrosion and theft management practices become a significant cost and daunting point of maintenance assumed by the Stormwater Department.
- 5 **Weakened Traffic Load Ratings:**
While these specific covers are not directly subjected to frequent heavy vehicle traffic, the covers need to be able to manage proof loads established by the American Association of State Highway and Transportation Officials (AASHTO) listed in M-306-10 for H-20/HS-20 and/or H-25/HS-25 traffic load ratings. Over time, covers with significant corrosion are at a considerable risk of failure in the event of incidental traffic, collisions, or other events where they could bear significant weight.
- 6 **Corrosion:**
Cast iron is commonly used in manhole covers and frames due to its durability and high compressive strength, but it is subject to corrosion and severe decay over time, decreasing the longevity of these lids.

FRP Solution

The city determined that replacing existing metal lids with Fiberglass would provide a long-term solution that would be immune from theft, would not rust or corrode in the elements, and would be lighter and safer to handle.

**Cost Savings:**

FRP lids are not subject to corrosion, and the city no longer has the monetary burden of replacing lids stolen for their scrap value, an estimated savings of hundreds of thousands of dollars every year. FRP lids hold zero scrap value, so they are immune to any form of theft.

**Operator Ease-of-Use:**

VPC's hinged design allows greater ease of operation with a predictable guided lift compared to the existing covers. The hinged design will only open backward to a specific distance and does not flop all the way over. In addition to the hinged design, FRP covers are significantly lighter than cast iron.

**Traffic Load Rated:**

The storm drain covers are fabricated using a compression molding process. This production process creates a structurally dense product compared to traditional open-molded production techniques. The result is a heavy-duty fiberglass frame and cover assembly that can sustain the traffic loads required for the application.

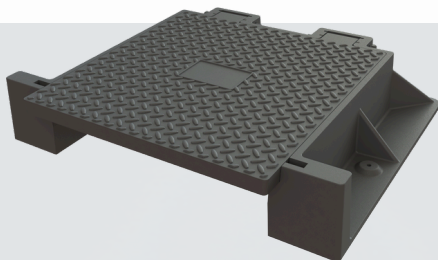
**Aesthetically Pleasing:**

Fiberglass lids are more aesthetically pleasing in citizens' yards. They blend in nicely and do not rust or corrode over time.

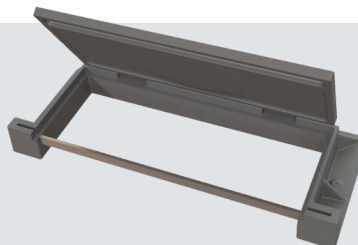
Product Sizes

STORM DRAIN COVERS COME IN TWO STANDARD SIZES (custom configurations available upon request)

2 X 2 (FEET)



2 X 5 (FEET)





Water Control Products

FIBERGLASS TROUGHS, WEIRS & BAFFLES

VPC Fiberglass provides weir plates and scum baffles in any length and size in a variety of configurations, including v-notch, effluent, sharp-crested, and rectangular. Designed to replace concrete or metal in a corrosive or challenging environment. Fiberglass brackets, splice plates, and washers are also available.



BAFFLE

Fiberglass adjustable plate for separating solids from water.



TROUGH

Fiberglass channel for liquid retention and direction.



WEIR GATE

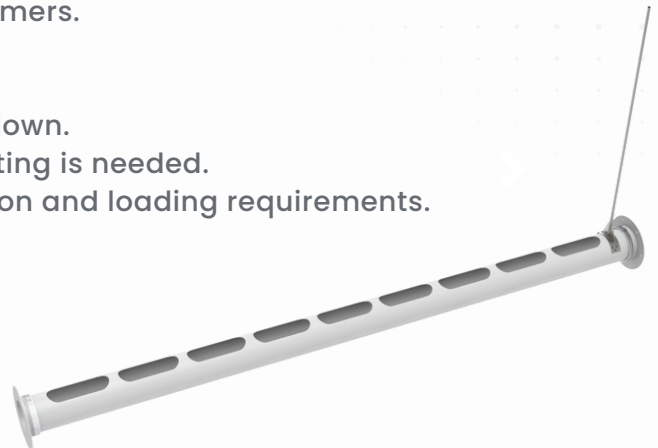
Fiberglass adjustable plate for separating solids from water.

FIBERGLASS SCUM SKIMMER

FRP Scum Skimmers offer a highly corrosion-resistant, lightweight, low-maintenance, and superior life-cycle alternative to metal scum skimmers.

Features:

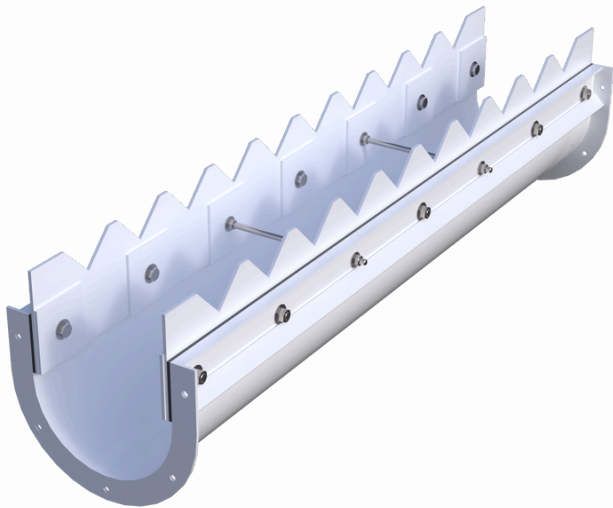
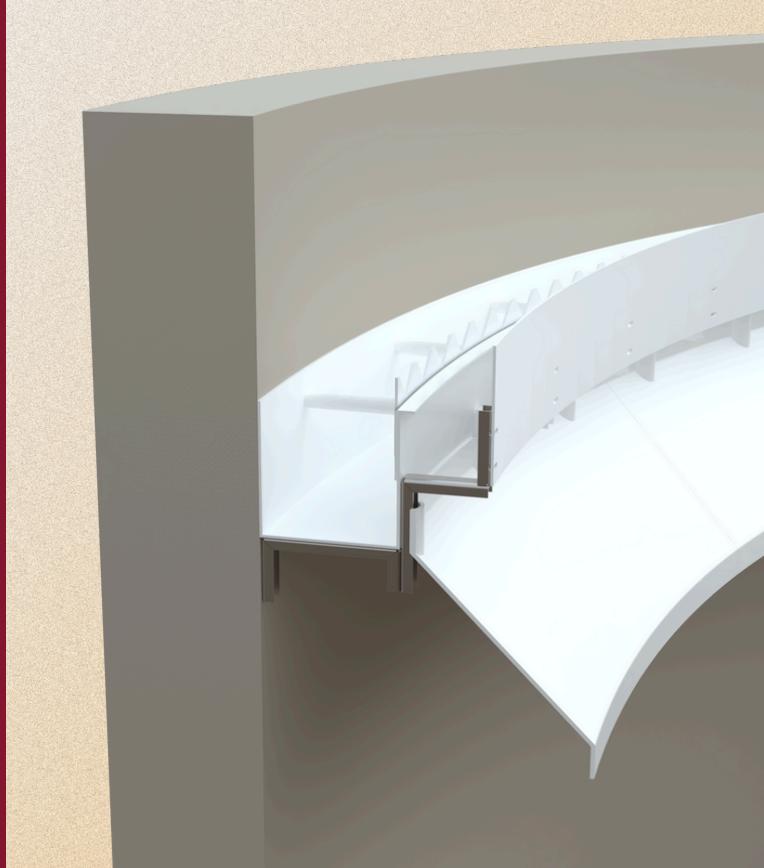
- Low Maintenance requires only a periodic washdown.
- No initial or continuous priming, painting, or coating is needed.
- Engineered for each application to meet deflection and loading requirements.
- FRP Skimmer with slotted collection pipe.
- Available in standard and custom sizes.



Fiberglass Troughs

FRP troughs for use in effluent clarifiers and filtration systems.

Customize to Project Specs



Overview

The VPC Fiberglass Trough System is a rugged, corrosion-resistant solution designed for industrial water and wastewater applications. Manufactured from high-strength, fiberglass-reinforced plastic (FRP), these troughs provide exceptional longevity, dimensional accuracy, and installation versatility. With integrated U-shaped and square configurations, they are ideal for both new construction and retrofit environments. All mounting brackets, hardware, and stabilizers are stainless steel.

Standard Configurations

U Shaped Troughs

12",14",16",18",20",24",30"

Square Trough Assembly

12",14",16",18",20",24",30"

Mounting

Flange-Mounted Design with Mounting Brackets and Sealing Gaskets

Material

All-FRP, Corrosion-Resistant Build: Made from isophthalic polyester or vinylester resin for chemical resistance and long-term durability.

Applications

Filter, Launder, and Finger Weir Systems

Key Advantages

Corrosion-Resistant Construction

Our FRP troughs are made with premium polyester resin for superior resistance to rust, chemicals, and UV damage. We go further by using FRP ribs and supports to reduce metal use, allowing for longer runs before reinforcement is needed. The result: a stronger, more efficient system built to last.

Precision-Molded for Strength & Fit

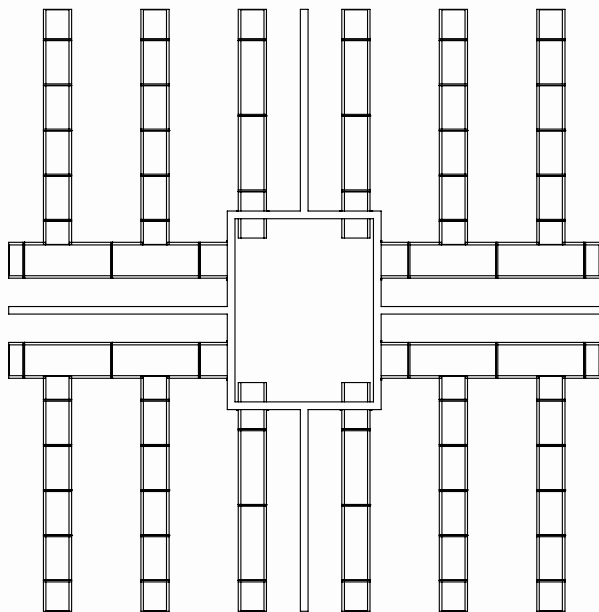
Each FRP unit is reinforced and dimensionally accurate, built with structural profiles to handle demanding operational loads. Smooth, resin-rich interiors reduce flow resistance and enhance hydraulic efficiency. Using 3D modeling and CNC-machined molds, we ensure every part is crafted with precision and consistency.

Lightweight & Easy to Install

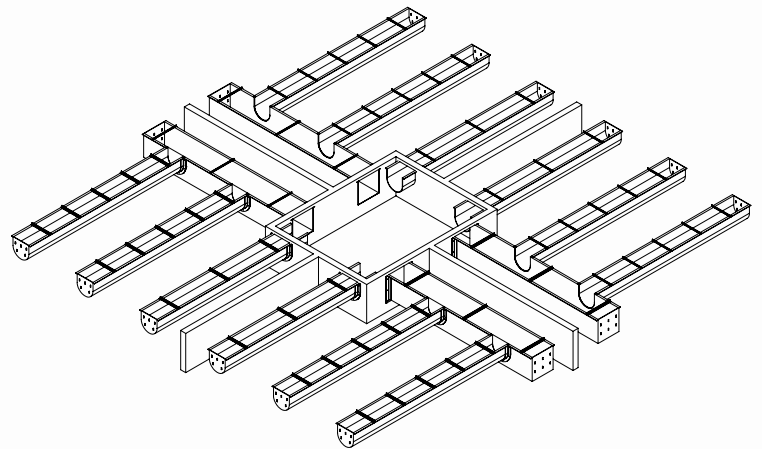
Compared to concrete or steel alternatives, FRP troughs are significantly lighter and easier to handle, reducing labor and equipment costs during installation.

Maintenance-Free System

Our system features gasket-sealed flanges, mounting brackets and stainless steel hardware, eliminating the need for regular maintenance or adjustments. Unlike metal, FRP offers a significantly longer lifespan with virtually zero upkeep. These troughs are built to last for decades — delivering a durable, maintenance-free solution proudly made in the USA.



PLAN VIEW



ISOMETRIC VIEW



Fiberglass Tanks

HOLDING TANKS, CONTAINERS & COVERS

Spill Containers

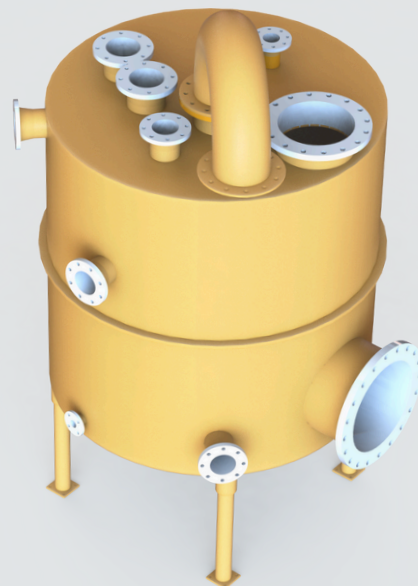
Fiberglass units are built to the required capacity with stainless steel hinged and lockable hatches. Adjustable legs allow the spill container to be set at a variety of heights. Flexible boots are provided for simple connection to the remote fill or vapor lines. A lockable ball valve drain is provided for easy drainage.

Holding Tank

- Designed exclusively for rigorous industrial use.
- Will not rust, rot or corrode.
- Filament wound offering one-piece construction
- Designed to withstand the harsh sun, wind, and rapidly changing weather
- Wide range of oil field tanks to suit your particular storage.

Odor Control Covers

The experienced professionals at VPC can design and install a custom fiberglass cover that will contain the odor and will not rust or corrode.



EcoTech + HyTech Booths



The EcoTech Booth (3' x 5' x 8' tall) features a sliding window, two fixed windows, a swing-open door, interior shelf, light fixture with switch, 20 amp outlet, 30 amp 2-breaker load center, and slip-resistant floor. Heating available upon request. Ideal for parking lots, temporary ticketing facilities, or any open work environment.

The HyTech Booth, our premium fiberglass shelters offer comfort for security guards, parking attendants, and toll collectors. Suitable for airports, theme parks, campuses, and hospitals, they come in various sizes and colors, ensuring an attractive, low-maintenance, and durable solution. Non-corrosive, non-conductive, RF transparent, and shipped fully assembled.

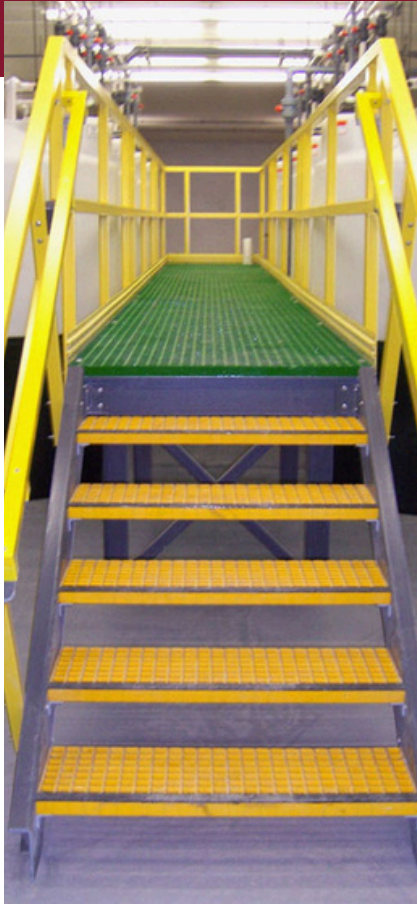
Features:

- Carpeted interior walls
- Operatable window
- 360 visibility
- Electrical package
- Resilient rubber
- Commercial-grade locking door
- Countertop with locking drawer
- Steel-reinforced fiberglass panels

Options:

- Heating
- Air conditioning
- Choice of exterior color

Ladders, Platforms + Railings



UNRIVALED DURABILITY: FIBERGLASS STAIRS

VPC is proud to offer a variety of ladders, ladder cage systems, handrail systems, platforms, catwalks, and walkways. Each system is designed to fit whatever specifications your project requires. Our design team will work with you and customize the product to meet your needs. Projects are designed to meet OSHA requirements and are fabricated at the shop prior to shipping. Depending on the size of your project, the final product can be shipped fully assembled to make installation quick and easy.



Staff & Tank Gauges

GAUGES

VPC offers a wide range of Staff and Tank Gauges that withstand extreme elements and are guaranteed not to chip, crack, or rust. They are fabricated with modern-day materials that offer advanced performance at a reduced cost.

Gauges can be provided in either a vinyl or a base material known as DiBond, which consists of two sheets of 0.10-thick white polyester-painted aluminum with a black thermoplastic core.

Our graphics are solvent-printed ink with five mils of clear polyester optimum chemical, abrasion, and UV protective topcoat. Mounting holes (3/16) are provided at strategic points. Staff Gauges can also adhere to fiberglass backing and PVC or can be purchased as an adhesive-backed vinyl gauge. These bold graphics are designed for clarity at a greater distance, and dimensional lines are flush bottom machines for accurate joining for multi-sectional gauges.



P: 585.735.9668

F: 585.735.9965

**ADMINISTRATIVE
OFFICES**

2410 North Forest Road
Getzville, NY 14068

**MEDINA
MANUFACTURING**

10478 Ridge Road
Medina, NY 14103

**LOCKPORT
MANUFACTURING**

222 South Niagara Street
Lockport, NY 14094

info@vpcfiberglass.com

