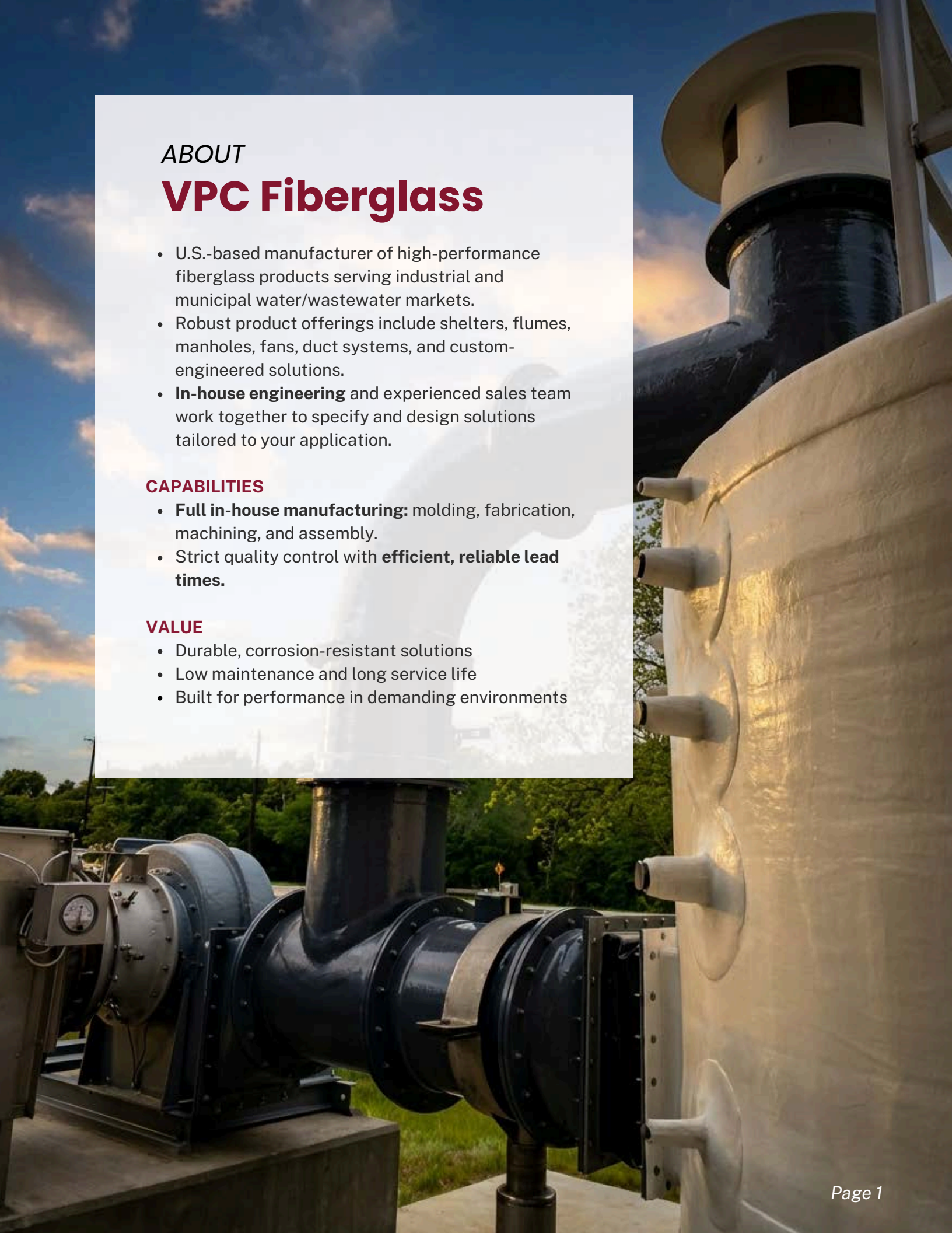


Fiberglass Solutions for Demanding Environments



CORROSION-RESISTANT FIBERGLASS PRODUCTS BUILT FOR
LASTING PERFORMANCE IN THE TOUGHEST ENVIRONMENTS.



ABOUT

VPC Fiberglass

- U.S.-based manufacturer of high-performance fiberglass products serving industrial and municipal water/wastewater markets.
- Robust product offerings include shelters, flumes, manholes, fans, duct systems, and custom-engineered solutions.
- **In-house engineering** and experienced sales team work together to specify and design solutions tailored to your application.

CAPABILITIES

- **Full in-house manufacturing:** molding, fabrication, machining, and assembly.
- Strict quality control with **efficient, reliable lead times.**

VALUE

- Durable, corrosion-resistant solutions
- Low maintenance and long service life
- Built for performance in demanding environments

PRODUCT Categories

- Shelters3
- Standard Fiberglass Buildings7
- Custom Fiberglass Buildings9
- Flumes13
- Manhole Systems15
- FRP Fans20
- Duct, Duct Rated for Direct Burial.....25, 27
- Scrubbers and Vessels29
- Manhole and Access Covers31
- Water Control Products33
 - Troughs
 - Weirs
 - Density Current Baffles
- Ladders, Platforms, Railings36



VPC Fiberglass Duct Rated for Direct Burial



FIBERGLASS **Shelters**

VPC Fiberglass Shelters are tough, corrosion-resistant enclosures **designed to protect critical equipment in harsh environments.**

KEY FEATURES:

- Insulated
- Maintenance-Free
- Corrosion-Resistant
- Fully Assembled
- Weatherproof
- Single-Piece Construction
- 130 MPH Wind Load
- 40 PSF Snow Load



In Stock and Ready to Ship

FRP Shelter Model 200 and Model 400

Applications: Sampler Shelters, Pump Stations, Well Heads, Telecom, Radar, Chemical Feed, SCADA Systems + More.

Specifications:

Shelter Model	Length	Width	Height	Access Type	Door Opening
Model 50	29 IN	29 IN	35 IN	Single Door	Width: 22 IN, Height: 27.25 IN
Model 100	37.75 IN	37.75 IN	50 IN	Single Door + Top Hatch Door	Width: 27 IN, Height: 43.375 IN
Model 150	36 IN	26 IN	54 IN	Single Door	Width: 26 IN, Height: 41.375 IN
Model 200	45 IN	45 IN	74 IN	Single Door	Width: 37.75 IN, Height: 64.5 IN
Model 300	60 IN	60 IN	84.5 IN	Single Door	Width: 38 IN, Height: 64.5 IN
Model 400	72 IN	72 IN	84.5 IN	Single Door	Width: 50.125 IN, Height: 64.5 IN
Model 5427	54 IN	27 IN	78 IN	Single Door	Width: 36 IN, Height: 70 IN
Model 1630	16 IN	30 IN	50 IN	Clam Shell / Flip Top	Width: 27 IN, Height: 47 IN
Model 400	60 IN	48 IN	43 IN	Tilt Back	Width: 46 IN, Height: 30 IN
Model 429	47 IN	47 IN	29 IN	Tilt Back	Width: 41 IN, Height: 34.69 IN
Model 433	49.5 IN	38 IN	36 IN	Clam Shell / Flip Top	Width: 49.6 IN, Height: 63.375 IN
Model 400G	60 IN	48 IN	43 IN	Gull Wing	Width: 50.166 IN, Height: 46.062 IN
Model 400GX	60 IN	48 IN	43 IN	2X Gull Wings	Width: 50.875 IN, Height: 44 IN



VPC Model 300 Installed at Water Treatment Plant Serving Food Production Facility

A Selection of Our Enclosures



Model 400GX

Both sides of this model open for easy pump access.



Model 1630

Designed to house SCADA systems.



Model 600

Our largest shelter for municipal, industrial, and utility applications.



Model 400

Tilt shelter with lift handle and piano hinges.



Model 300

Often used in cellular or antenna shielding.



Model 100

Self-contained pumping or lift station enclosure



FIBERGLASS STANDARD

Buildings

DURABLE, PRE-MOLDED FIBERGLASS STRUCTURES.

A one-piece molded fiberglass building, complete with a built-in door and robust stainless-steel hardware, ensures **long-lasting performance** with minimal maintenance.

Various Sizes for Versatile Applications:

Standard Sizes: 4' x 6' up to 14' x 20'

Custom Options

- Designed to your specifications
- In-house engineering and design support

Standard Features

- Fiber-reinforced Plastic (FRP) Construction
- Isophthalic Polyester Resin
- UV-resistant Gel Coat Exterior
- UV-resistant Gel Coat Interior
- Rigid Polyisocyanurate Insulation (R7 per IN)
- Integral Base Mounting Flange (internal vs external model dependent)

Common Options

- Load Center
- External Fixed Louvers
- Light w/ Wall Switch
- 3/8" Integral Fiberglass Floor
- Laminated Plywood Interior in Walls/Roof
- Wall Mounted Unistrut
- Windows
- Double Doors

Specifications:

Standard Model	Length	Width	Height	Locking Type	Door Opening
VPC 4x6	72 IN	48 IN	90 IN	Three point locking latch w/ handle	WIDTH: 36 IN, HEIGHT: 80 IN
VPC 6x8	96 IN	72 IN	90 IN	Three point locking latch w/ handle	WIDTH: 36 IN, HEIGHT: 80 IN
VPC 8x8	96 IN	96 IN	104 IN	Three point locking latch w/ handle	WIDTH: 36 IN, HEIGHT: 80 IN
VPC 8x10	120 IN	96 IN	104 IN	Three point locking latch w/ handle	WIDTH: 36 IN, HEIGHT: 80 IN
VPC 10x10	120 IN	120 IN	106 IN	Three point locking latch w/ handle	WIDTH: 36 IN, HEIGHT: 80 IN
VPC 10x12	144 IN	120 IN	106 IN	Three point locking latch w/ handle	WIDTH: 36 IN, HEIGHT: 80 IN
VPC 12x14	168 IN	144 IN	106 IN	Three point locking latch w/ handle	WIDTH: 36 IN, HEIGHT: 80 IN

Our Standard Buildings are Often Customized with a Double Door



VPC 4' X 6'
Fiberglass Building



VPC 6' X 8'
Fiberglass Building



VPC 8' X 8'
Fiberglass Building



VPC 4' X 6'
Fiberglass Building



VPC 6' X 8'
Fiberglass Building



VPC 8' X 8'
Fiberglass Building

CUSTOM Buildings

Our custom fiberglass buildings are designed to house generators, power systems, telecommunications equipment, and other critical infrastructure in demanding environments. Engineered to withstand harsh chemical and environmental conditions, each structure is tailored to meet specific project requirements.

APPLICATIONS

- Packaged Pump Skid Cover
- Maintenance Equipment Shed
- Phosphorus Removal Shelter
- Equipment Building
- Communications Shelters
- Noise Reduction Shelters
- Pump Cover
- Chemical Feed Pump Shelter
- Water Pump Cover
- In-Ground Vault
- Driver Relief Station
- Well Head Cover

Specifications	
MINIMUM One-Piece Molded Size	4 x 3 FT
MAXIMUM One-Piece Molded Size	14 x 20 FT
Modular Construction	Constructed in Size at 20 ft. W and No Limitation on Length.
Material	Fiberglass



ENGINEERED TO ENDURE, DESIGNED TO PROTECT.

VPC **Customized Fiberglass Buildings** are engineered for durability, security, and long-term performance – even in the harshest environments.

- **Built to Order:** Each structure is custom-designed to match your specific size, layout, and access requirements.
- **Durable Materials:** Constructed from corrosion-resistant, low-maintenance fiberglass.
- **Industry Applications:** Ideal for housing critical equipment in:
 - Water and wastewater treatment*
 - Utility installations*
 - Industrial facilities*
- **Reliable Performance:** Rugged construction and flexible design options ensure a dependable, long-lasting solution tailored to your project.



Custom Colors and Configurations



Removable Roof Hatch



Ventilation



LED Lighting Options

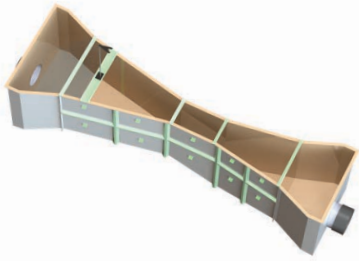
Electrical Packages

FIBERGLASS

Flumes

VPC offers a range of fiberglass flumes for **accurate flow measurement** in open channels and non-pressurized pipelines. Ideal for industrial, municipal, and agricultural applications, each flume is engineered for durability, precision, and easy installation.

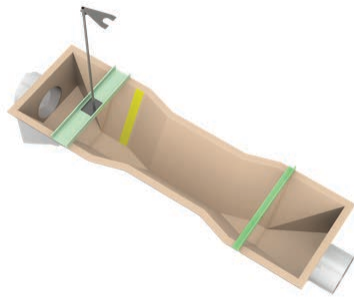




PARSHALL FLUME

Used to measure the flow in open channels and non-pressurized pipelines. The flumes are often used in industrial process discharge, sanitary and storm sewer discharge, and irrigation and agricultural runoff.

**Throat Widths:
From 1 IN -144 IN**



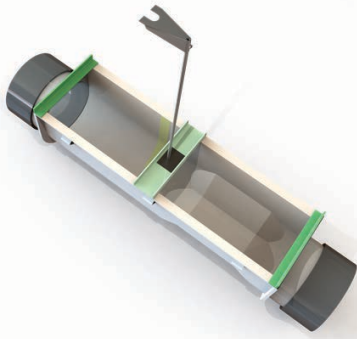
TRAPEZOIDAL FLUME

Commonly used in unpressurized open channels or pipelines.

Characteristics:

- Flat bottom for efficient head conversion.
- Operate without the need for free-fall discharge.
- Flume includes staff gauge and instrument mounting brackets.
- Mimics the natural shape of earthen and concrete-lined ditches.
- Solids pass through the throat without trapping.

Sizes: Small - Extra Large



PALMER BOWLUS FLUME

The Palmer Bowlus metering flume is widely used in open channels or pipelines that are not under any pressure.

Characteristics

- Low Head Loss
- Minimum flow restriction
- Measurement accuracy

Sizes: 4 IN - 48 IN



H/HS FLUMES

H flumes, originally designed for agricultural runoff, feature a V-shape for measuring a wide flow range. Common uses include irrigation, snowmelt, pond overflow, industrial discharge, and sanitary or storm sewer flow.

Size: From .50 ft to 4 ft





FIBERGLASS

Manhole Systems

Fiberglass manhole systems offer a durable, leak-free solution for wastewater applications. Their lightweight, one-piece, corrosion-resistant design ensures easy installation, long service life, and reliable performance for both municipal and industrial use.

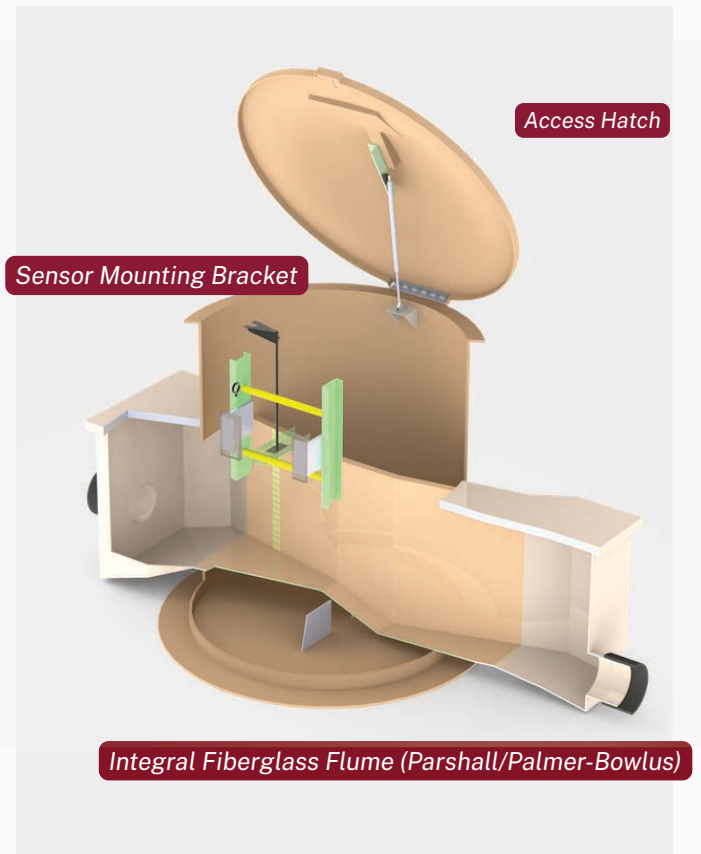
STANDARD FEATURES:

- Factory-assembled with fiberglass ladder, floor, and 2" NPT coupling
- One-piece, leakproof construction prevents infiltration and ensures long service life
- Lightweight (48" or 60" diameter) for easy installation with minimal equipment
- H-20 traffic rated options available
- Custom sizes and configurations available
- Optional hinged fiberglass cover or other cover configurations
- Easy installation with minimal equipment required
- Durable, high-strength design for long-term performance

METERING MANHOLE

Custom fiberglass flume-based metering manholes use ultrasonic sensors to deliver accurate wastewater flow measurement for sewer rate tracking and reduction. Built for long-term municipal and industrial use, they provide a reliable, leak-free solution.

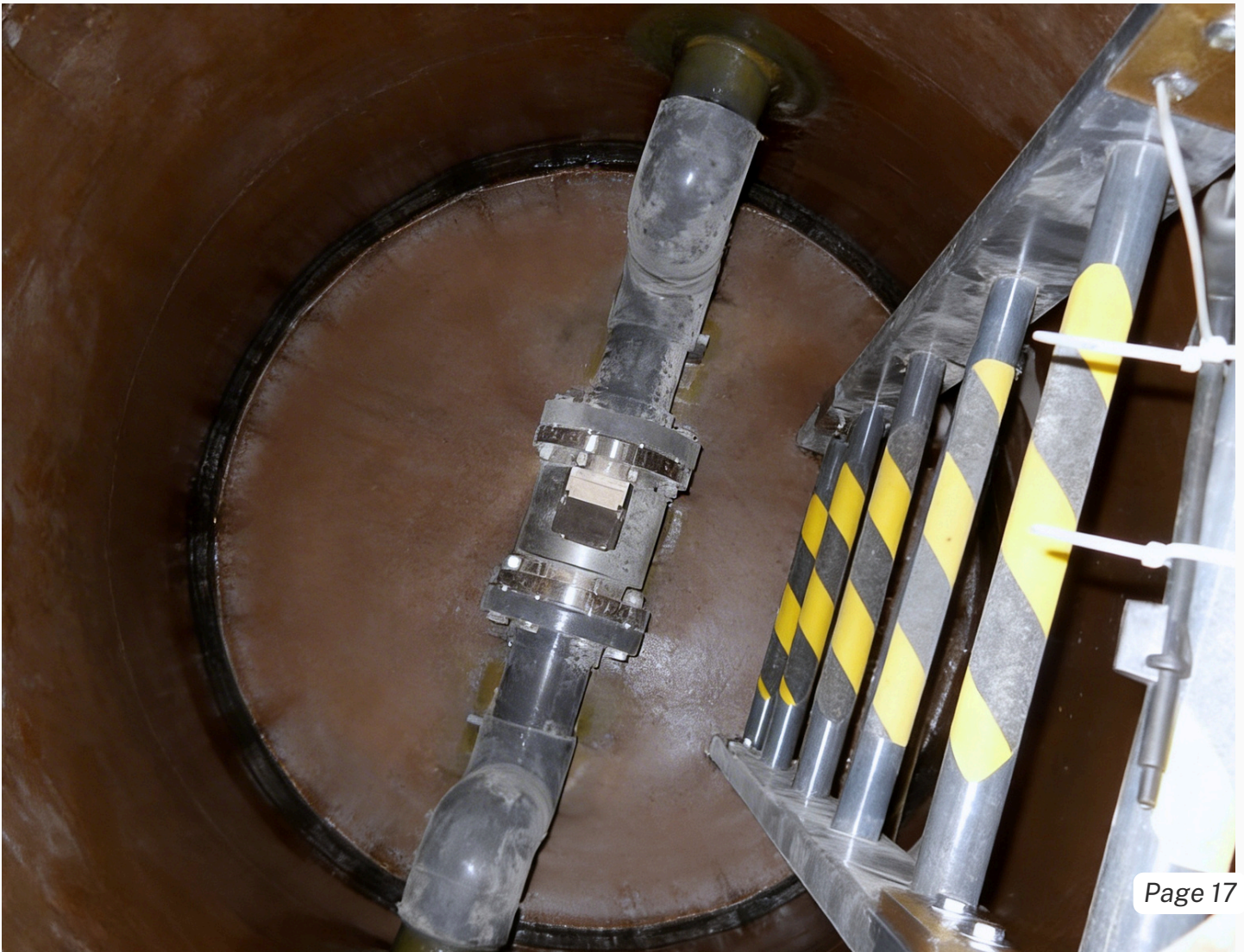
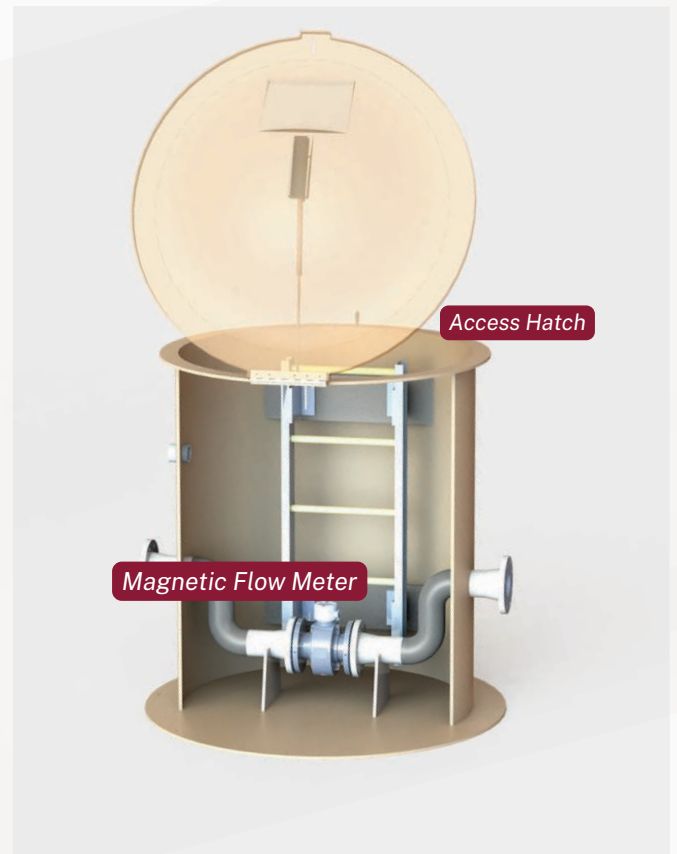
- **Accurate Flow Measurement** – Ultrasonic sensors ensure precise monitoring
- **Sewer Rate Tracking** – Supports billing and flow reduction programs
- **Corrosion-Resistant Fiberglass** – Durable in harsh wastewater environments
- **Leak-Free Construction** – Reliable long-term system performance
- **Municipal & Industrial Use** – Designed for demanding applications



MAG METER MANHOLE

Custom fiberglass manholes with integrated magnetic flow meters provide accurate, real-time wastewater measurement for sewer rate monitoring and reduction. Designed for durability and precision, they offer a reliable solution for municipal and industrial flow tracking.

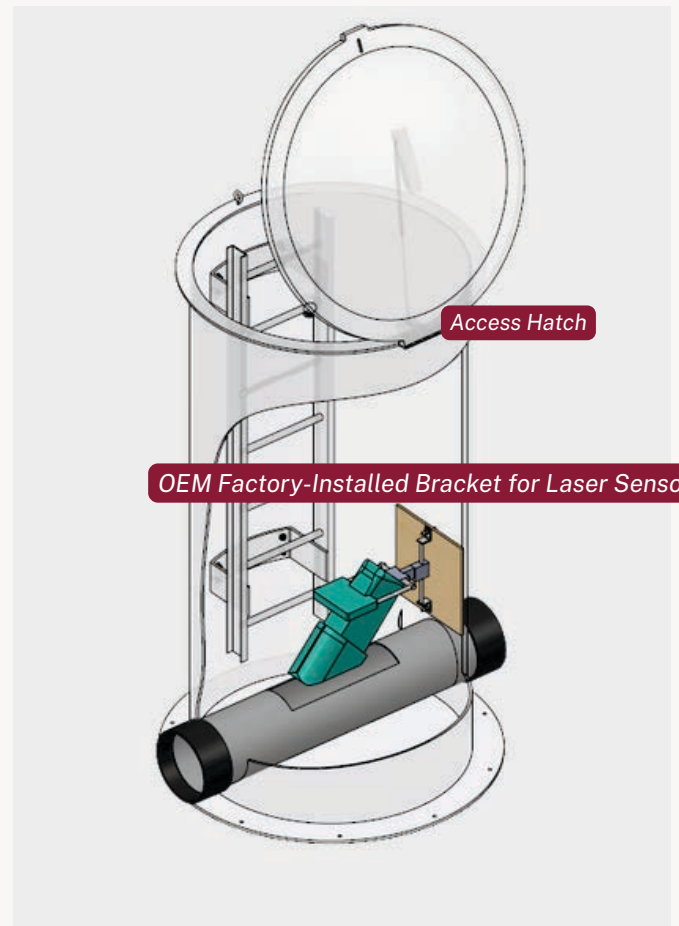
- **Magnetic Flow Meter** – Accurate, real-time flow measurement
- **Sewer Rate Reduction** – Supports billing accuracy and cost control
- **Corrosion-Resistant Fiberglass** – Built for harsh wastewater environments
- **Leak-Resistant Construction** – Ensures long-term reliability
- **Custom Configurations** – Designed to meet specific system requirements



DOPPLER AND LASER FLOW MEASUREMENT COMPATIBLE MANHOLE SYSTEM

Custom fiberglass metering manholes with non-contact flow measurement provide accurate, real-time wastewater and stormwater monitoring for compliance and system optimization. Built for durability, they deliver reliable flow tracking in harsh environments.

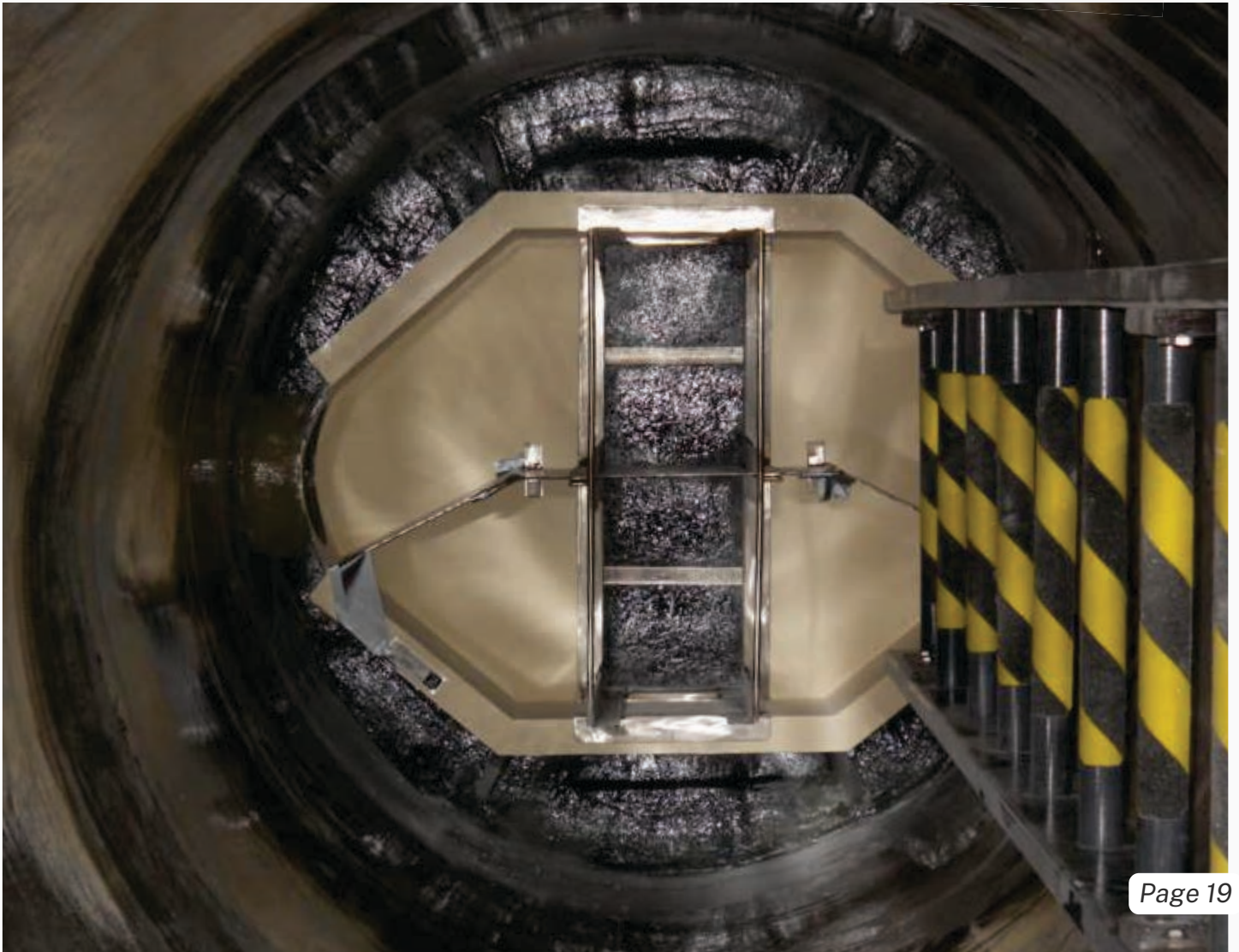
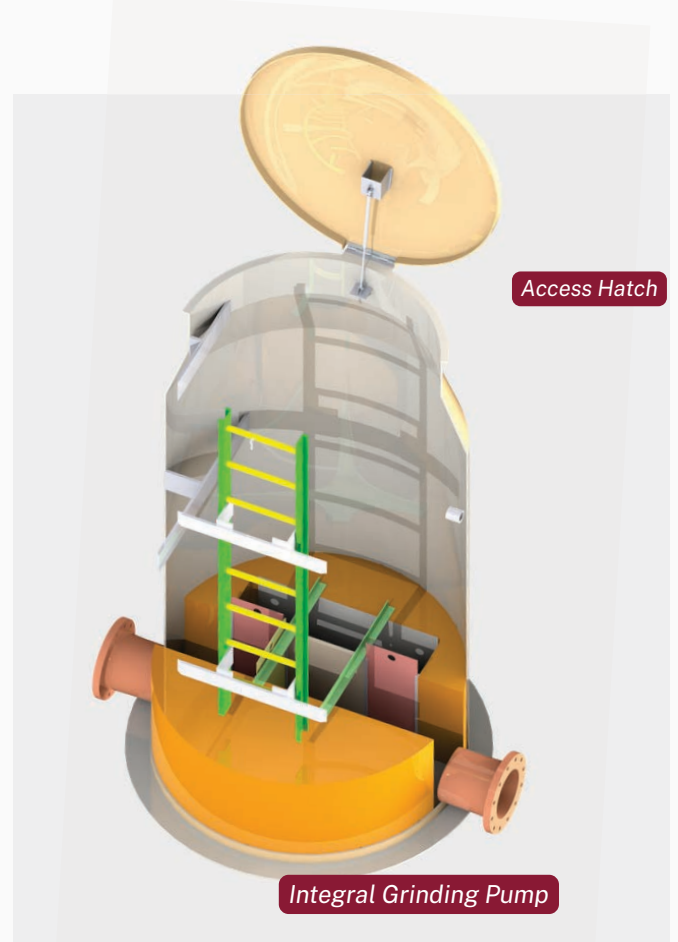
- **Laser Doppler Velocity Measurement** – OEM factory-installed bracket for laser sensor enables non-contact measurement of subsurface flow velocity.
- **Corrosion-Resistant Fiberglass** – Built for long-term performance in wastewater environments
- **Non-Contact Monitoring** – Reduces maintenance and eliminates sensor fouling issues
- **Leak-Resistant Construction** – Ensures long-term reliability
- **Custom Engineered Design** – Configured to meet site-specific hydraulic and installation requirements



GRINDER MANHOLE

Fiberglass grinder manhole systems are all-in-one wastewater structures that combine containment with in-line solids reduction. By integrating a grinding pump directly into the assembly, they help **maintain flow** and **reduce downstream blockages** in sewer applications.

- **Integrated Grinding Pump** – Breaks down solids to improve flow
- **Corrosion-Resistant Fiberglass** – Long-lasting in harsh wastewater conditions
- **Leak-Free Construction** – Ensures system integrity and reliability
- **Complete Access Package** – Includes domed lid, H-20 traffic-rated adapter, hatch, and ladder
- **Flexible Installation** – Designed for safe access and easy integration





FIBERGLASS

Fans

Our fans are designed to achieve maximum corrosion resistance while offering rugged construction, ease of maintenance and efficient operation. Fiberglass fans have an excellent history of **extended life expectancy** and in many cases can replace costly exotic metal fans.

FIBERGLASS PROPELLER FANS

High Airflow Efficiency:

- High CFM at low static pressure; ideal for moving large air volumes

Corrosion-Resistant

- Withstands chemicals, moisture, and harsh environments

Heavy-Duty Durability:

- Strong, non-metallic construction resists rust and wear

Customizable Options:

- Multiple sizes, blade designs, and mounting configurations available



MODEL TA
Tube Axial Fans

- 13 sizes available: 12" to 60"
- Capacities up to 90,000 CFM
- Pressures up to 5" SP

MODEL TAUB
Roof Exhaust Axial Fans

- 13 sizes available: 12" to 60"
- Capacities up to 90,000 CFM
- Pressures up to 2" SP



MODEL TAHD
Roof Supply Fans

- 13 sizes available: 12" to 60"
- Capacities up to 90,000 CFM
- Pressures up to 2" SP



MODEL WB
Wall Box Fans

- 13 sizes available: 12" to 60"
- Capacities up to 90,000 CFM
- Pressures up to 2" SP



FIBERGLASS IMPELLER FANS

High Static Pressure

- Moves air efficiently through ductwork and high-resistance systems

Corrosion-Resistant

- Withstands chemicals, moisture, and harsh environments

Quiet Operation

- Lower noise than propeller fans

Energy Efficient

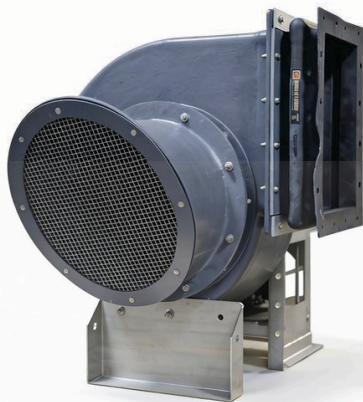
- Maintains performance in high-pressure applications

Heavy-Duty Durability

- Built for tough, long-term use

Customizable Options

- Multiple sizes, wheel designs, and configurations



MODEL RB Industrial Blowers

- 16 sizes available: 12" to 66"
- Capacities up to 90,000 CFM
- Pressures up to 20" SP



MODEL CVC Roof Exhaust Centrifugal

- 6 sizes available: 10" to 30"
- Capacities up to 19,000 CFM
- Pressures up to 3" SP

MODEL ILC Industrial Blowers

- 6 sizes available: 12" to 30"
- Capacities up to 20,000 CFM
- Pressures up to 9" SP



MODEL BIC Backward Inclined Centrifugal

- 16 sizes available: 12" to 66"
- Capacities up to 90,000 CFM
- Pressures up to 10" SP







FIBERGLASS

Duct

FRP duct is an ideal solution for industrial and commercial applications, offering **durability, flexibility, and corrosion resistance**. Each system can be fully customized, with our engineering team working closely with you to select the right materials and components for your specific project.

Standard Features

- Vinyl Ester Resin
- **SMACNA Type X (filament wound)** Construction
- Class 1 Flame Spread Without Additives
- C-veil Surface on Airstream

Custom Options

- Resin can be adjusted to best suit the chemical environment
- Synthetic surface veil is available along with different cure systems
- Abrasion resistant corrosion barrier on airstream
- Grounded airstream for explosive environments
- Intumescent paint available if needed
- Double wall insulation

SMACNA-COMPLIANT DESIGN AND QUALITY ASSURANCE

Manufactured in accordance with SMACNA standards, these duct systems meet established industry guidelines for structural integrity, fabrication quality, and installation practices. This ensures consistent performance, safety, and compatibility across a wide range of HVAC and process ventilation applications.



CONFIGURATION OPTIONS

Round duct available in diameters from 2" to 96"
Wide range of rectangular duct sizes

Full selection of fittings:

- Tees
- Y-branches
- Elbows
- Crosses
- Hoods
- Round dampers
- Square dampers
- Concentric reducers
- Eccentric reducers





FIBERGLASS

Duct Rated for Direct Burial

VPC Fiberglass offers a direct burial duct solution engineered with corrosion-resistant, high-strength FRP for long-term durability and dependable underground performance. Built to withstand harsh environments, *GroundGuard* provides a durable and efficient solution for air distribution in demanding settings. **GroundGuard is approved for direct burial.**

GroundGuard

Corrosion-Resistant, High-Strength,
Class 1 Duct Rated for Direct Burial

Key Features

- **Corrosion & Pressure Resistant:** Designed for harsh environments and static pressure.
- **Precision Manufacturing:** Filament-wound process meets SMACNA standards.
- **Size Range:** Standard sizes 2" to 72" diameter.
- **Versatile Applications:** Suitable for industrial & commercial use.
- **Custom Options:** Configurable to project needs.
- **Expert Support:** Engineering assistance for material & component selection.
- **Class 1 Fire Rating:** Meets NFPA 90 standards for flame spread. Smoke rating available as required for added safety.



SINGLE-WALL DUCT

VPC Fiberglass' Class 1-rated single-wall duct can meet ASTM E-84 25/50 flame and smoke requirements, approved for wastewater and industrial applications.



DOUBLE-WALL DUCT

VPC Fiberglass' Class 1-rated double-wall duct reduces thermal losses. With standard 1" insulation, it offers a minimum R-value of 6. Other options are available.

A large, white, cylindrical fiberglass scrubber tank with a domed top and several access points, situated outdoors in a gravel area with snow patches and a forest in the background under a clear blue sky.

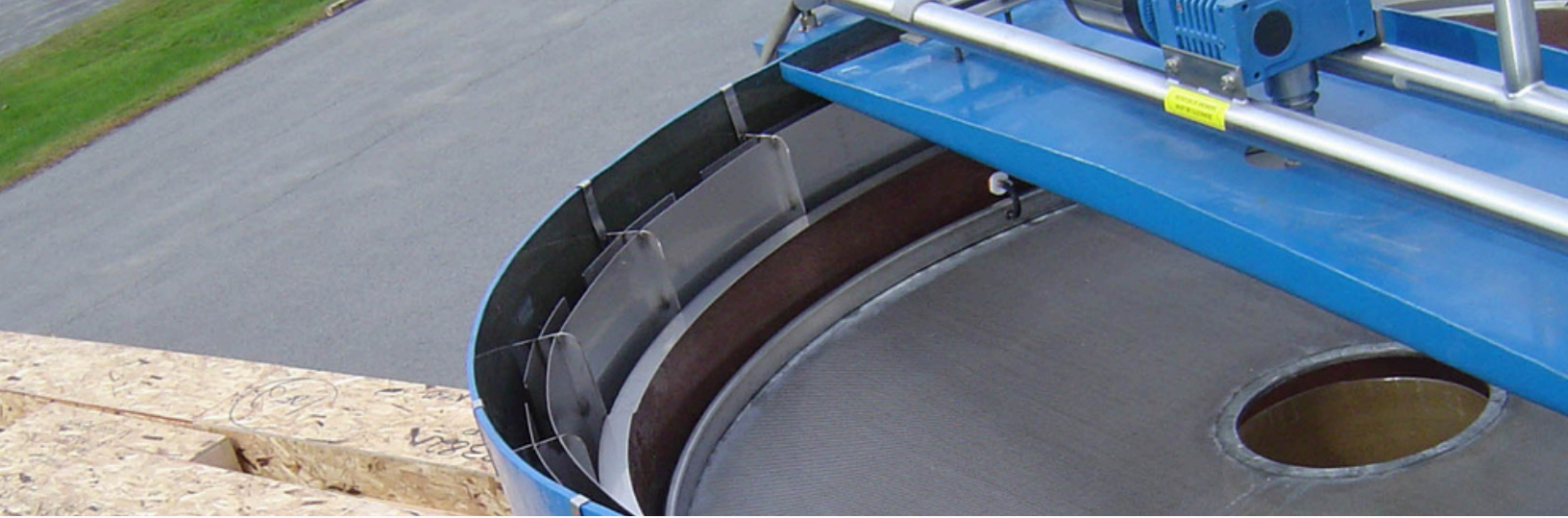
FIBERGLASS

Scrubbers and Vessels

Designed for demanding wastewater and industrial applications, offering reliable containment, corrosion resistance, and long-term performance in pump stations, chemical storage, and odor control systems where durability is critical.

KEY BENEFITS:

- **Custom-built tanks & covers** – Sized and configured to exact capacity and site requirements
- **Corrosion-resistant FRP** – Ideal for wastewater, chemical storage, and harsh environments
- **Integrated tank features** – Flanges, hatches, vents, nozzles, and odor control connections
- **Controlled shop fabrication** – Consistent quality and fit-up
- **Leak-tight construction** – Reliable containment, long service life



SPILL CONTAINERS

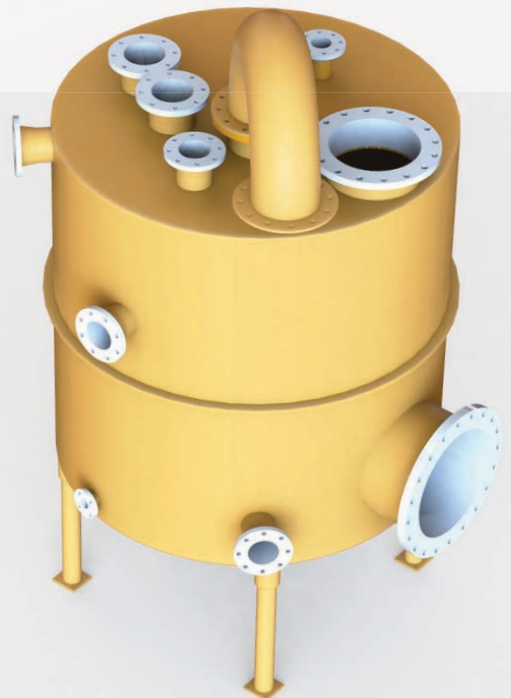
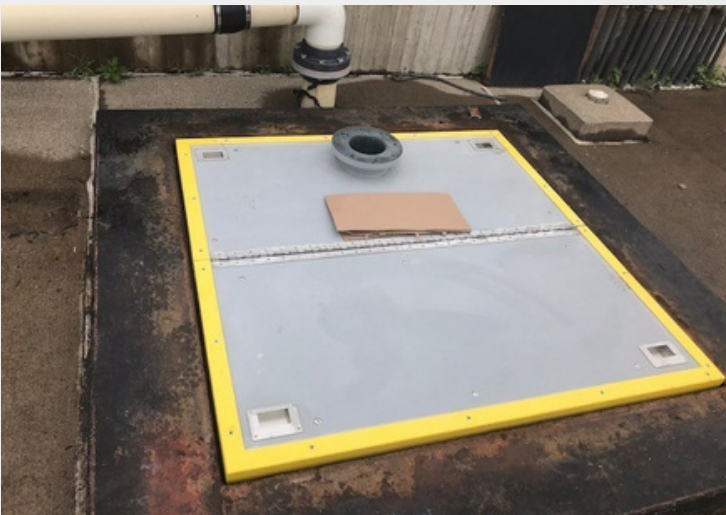
Fiberglass units are built to the required capacity with stainless steel hinged and lockable hatches. Adjustable legs allow the spill container to be set at a variety of heights. Flexible boots are provided for simple connection to the remote fill or vapor lines. A lockable ball valve drain is provided for easy drainage.

HOLDING TANK

- VPC Fiberglass manufactures holding tanks for industrial liquid storage and management
- Available in a wide range of oil field tank configurations to suit specific storage needs
- Designed to meet project requirements across various applications

ODOR CONTROL COVERS

Fiberglass odor control covers provide **durable, corrosion-resistant containment** of foul gases in wastewater systems, helping reduce odors and improve environmental compliance. and can be custom-designed to fit the exact dimensions and performance requirements of any application.



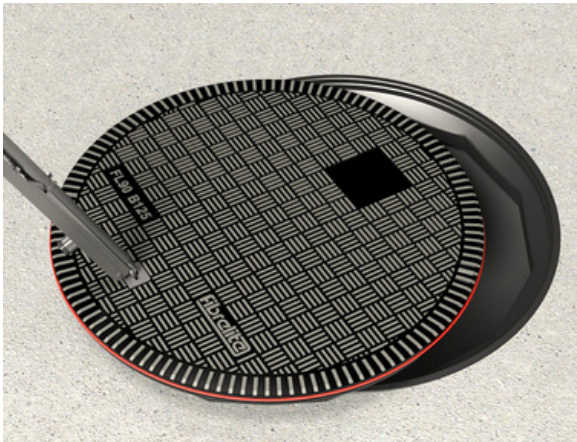
FIBERGLASS

Manhole & Access Covers

VPC offers a full line of manhole, vault, basin, and wet well covers engineered for durability, safety, and long-term performance. As a lightweight alternative to cast iron, these fiberglass covers reduce handling risk while providing reliable protection in municipal, industrial, and utility applications.

KEY FEATURES & BENEFITS:

- Lightweight for safer, easier handling and installation
- Corrosion-resistant and non-conductive for harsh environments
- Traffic-rated and pedestrian-rated options available
- Lockable and watertight designs for added security
- No scrap value to help deter theft
- Custom sizes and shapes
- Range of UV stable colors available that will not flake or crack



Fibrelite Manhole Covers

Wide range of *sizes from 12 - 55 IN*, wide range of shapes.



Traffic Rated Lockable Manhole Covers

Available in *sizes from 24-36 IN*, covers are nonconductive, non-corrosive, and UV stable.



Manhole Risers

Custom fiberglass flanged riser designed to securely mount a manhole cover to the manhole structure.



Custom Manhole Covers

For stores, schools, businesses, and municipalities, VPC Fiberglass offers custom covers built to your exact specifications.



Storm Drain Covers

H-20 rated fiberglass storm drain covers available in 2' x 5' and 2' x 2' sizes, designed for durability and reliable performance in traffic applications.



FIBERGLASS

Water Control Products

VPC Fiberglass manufactures high-performance water control components including **weir plates, scum baffles, troughs, scum skimmers, and walk-on cover panels**. Available in virtually any length, size, and configuration — such as V-notch, effluent, sharp-crested, and rectangular — these fiberglass (FRP) products are designed to replace traditional concrete and metal systems in corrosive or demanding environments.

KEY FEATURES & BENEFITS:

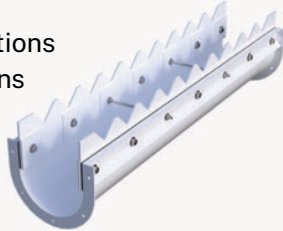
- **Custom sizes and configurations** to meet exact project specifications
- **Multiple weir styles** available including V-notch, effluent, sharp-crested, and rectangular
- **Corrosion-resistant fiberglass** construction ideal for harsh wastewater environments
- **Improved flow control** and system performance
- Low maintenance and long service life
- **Complete system components available** including fiberglass brackets, splice plates, and washers
- **Walk-on cover panels** designed for safety, durability, and accessibility



FRP TROUGHS

Fiberglass troughs are corrosion-resistant FRP channels designed for efficient liquid collection, retention, and flow direction in water and wastewater systems. They are available in:

- U-shaped configurations
- Square configurations



Suitable for both new construction and retrofit applications, they feature stainless steel hardware for long-term durability and reliable performance.



FRP WEIR PLATES, SCUM BAFFLES

VPC Fiberglass **precision-molded weirs** provide consistent flow control in clarifiers and treatment basins. Made from high-performance fiberglass, they deliver long-lasting durability and are suitable for both standard and custom applications.

VPC Fiberglass scum baffles **control surface scum and floating debris** in clarifiers and treatment basins. Made from corrosion-resistant fiberglass, they provide durable, low-maintenance performance and are available in multiple widths and configurations, including reinforced options for different treatment applications.

Density Current Baffles – Fiberglass baffles engineered to reduce short-circuiting and improve settling performance in clarifiers and basins.

FRP SCUM SKIMMERS

FRP Scum Skimmers offer a highly corrosion-resistant, lightweight, low maintenance, and superior life-cycle alternative to metal scum skimmers. VPC has many years committed to excellence in engineering and fabricating composite flow moderation products and has become a leader in the industry.

Key Features:

- Low maintenance requires only a periodic washdown.
- No initial or continuous priming, painting, or coating is needed.
- Engineered for each application to meet deflection and loading requirements.
- FRP Skimmer with slotted collection pipe.
- Available in standard and custom sizes.





FRP STRUCTURAL WALKABLE TANK AND LAUNDRY COVER PANELS

Our **FRP tank cover panels** are a durable, corrosion-resistant solution designed for long-lasting tank protection. The system includes FRP panels, FRP or stainless-steel support brackets, and fasteners to ensure strength and reliability.

These covers create a continuous surface above the tank to:

- Inhibit algae growth
- Block direct sunlight
- Prevent windblown debris
- Contain localized odors
- Slip-resistant

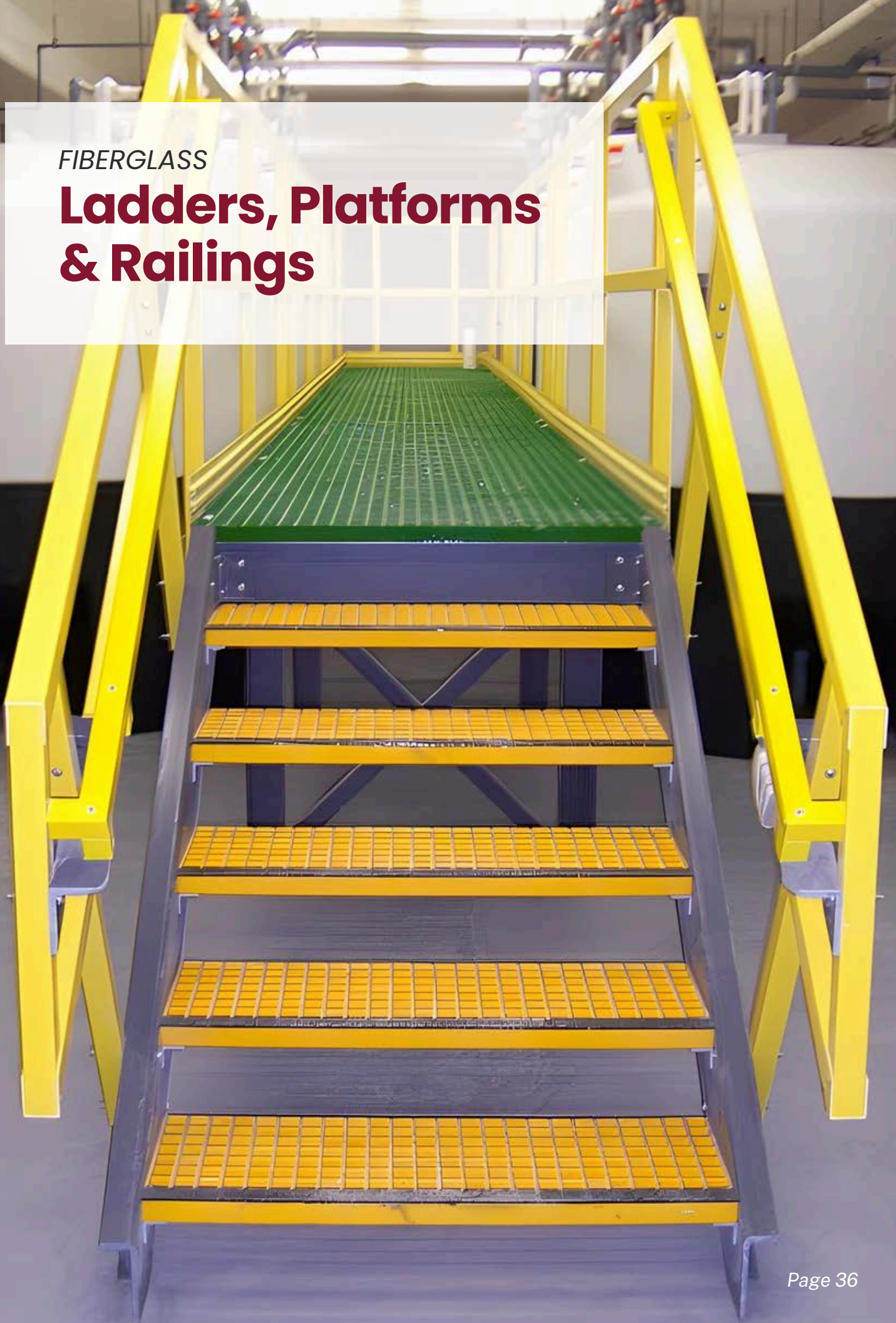
Custom-Fit — Built to Your Specs

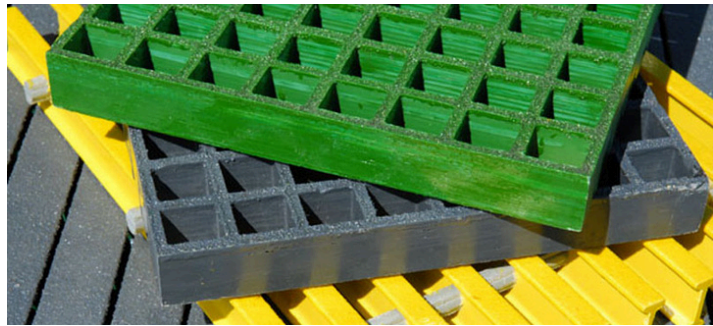
Key Features:

- **Custom-Sized:** Panels made to your specifications, curved for round tanks or straight for rectangular tanks
- **Walkable & Durable:** Designed to support regular use, as well as snow, wind, and live loads, with engineered strength and safety built in
- **Premium Materials:** UV-stabilized FRP with sealed factory-cut edges
- **Smart Design:** 3/16" thick, 4' wide, minimum 6' length; panels form a continuous structure yet operate individually. Flatness variation $\leq 1/4$ "
- **Environmental Protection:** Designed to enclose tanks and minimize the release of odors, our FRP covers provide a safer, more pleasant environment around your facility
- **Stainless Hardware:** 316 stainless steel fasteners and anchors

FIBERGLASS

Ladders, Platforms & Railings





LADDERS, PLATFORMS AND RAILINGS

VPC offers custom-fabricated access and safety systems designed to meet a wide range of project needs, including ladders, ladder cages, handrails, platforms, catwalks, and walkways. Each system is engineered to your specifications and built for reliable performance.

- Includes **ladders, cages, handrails, platforms, catwalks, and walkways**
- Engineered to **meet OSHA safety standards**
- Supported by a design team that works directly with your project needs

VPC FIBERGLASS

585.735.9668

Version 1.0

Production Facility

10478 Ridge Road
Medina, New York 14103

Production Facility

222 South Niagara Street
Lockport, New York 14094

Administrative Office

2410 North Forest Road
Suite 301
Getzville, New York 14068

Need Help with a Project?

Our engineering and sales
team partners with you at
every stage to ensure a
seamless, successful project.

 585.735.9668

