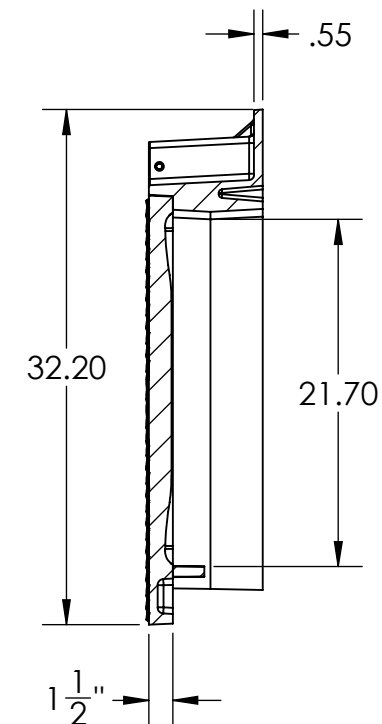
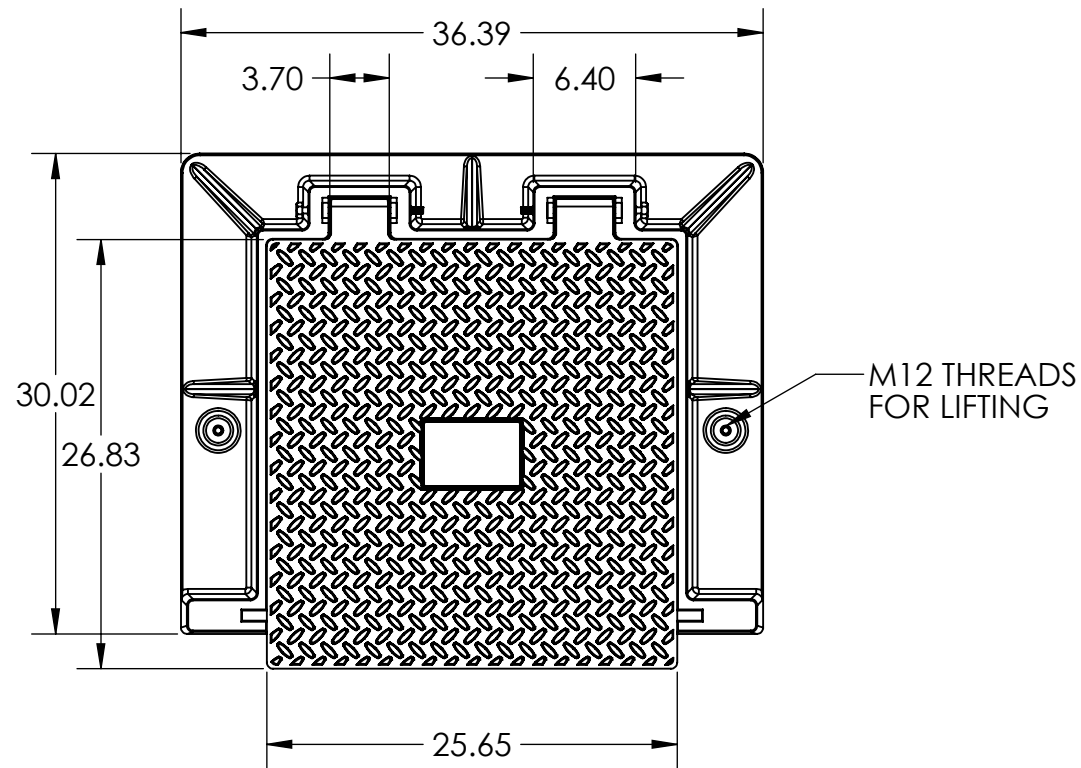
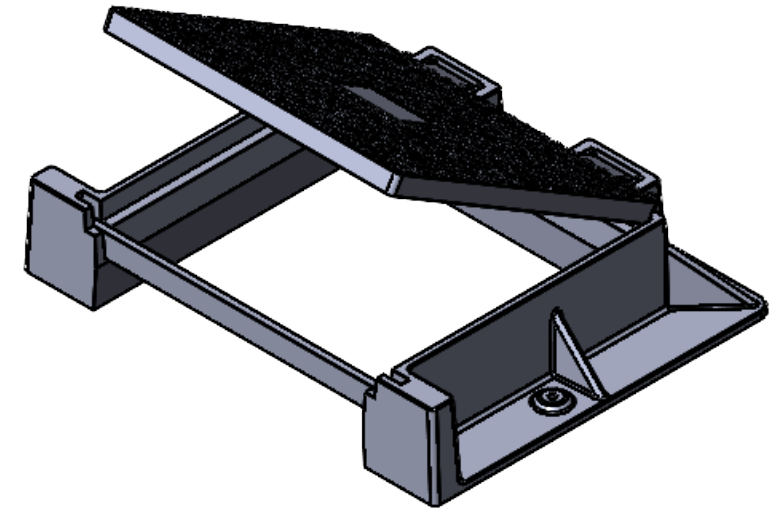
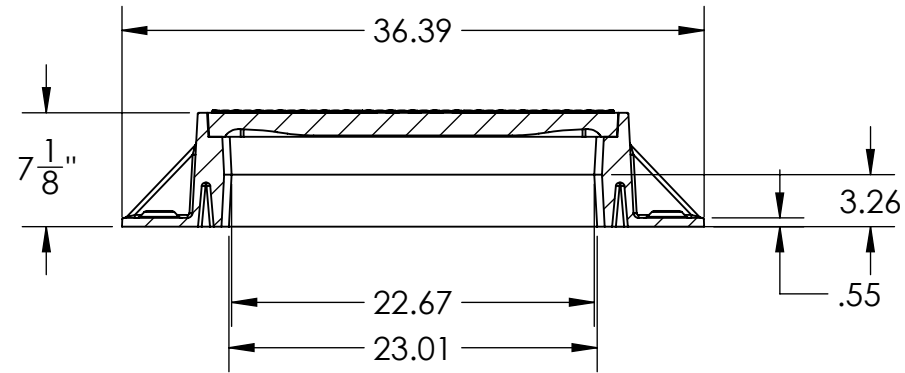


SECTION A-A
SCALE 1 : 12




DRAFT ANGLE
IS 3 DEGREES

SECTION B-B
SCALE 1 : 12

NOTE: 304 STAINLESS STEEL BAR IS 2" x .63" x 28.74"

PROPRIETARY AND CONFIDENTIAL
THE INFORMATION CONTAINED IN THIS DRAWING IS THE SOLE PROPERTY OF VIRTUAL POLYMER COMPOUNDS. ANY REPRODUCTION IN PART OR AS A WHOLE WITHOUT THE WRITTEN PERMISSION OF VIRTUAL POLYMER COMPOUNDS IS PROHIBITED.

		UNLESS OTHERWISE SPECIFIED:		NAME	DATE
		DIMENSIONS ARE IN INCHES		DRAWN	CD
		TOLERANCES:		CHECKED	---
		FRACTIONAL ±		ENG APPR.	---
		ANGULAR: MACH ± BEND ±		MFG APPR.	---
		TWO PLACE DECIMAL ±		Q.A.	---
		THREE PLACE DECIMAL ±		COMMENTS:	
		INTERPRET GEOMETRIC TOLERANCING PER:			
		MATERIAL:			
		FINISH:			
NEXT ASSY	USED ON	DO NOT SCALE DRAWING			
APPLICATION					



VPC
FIBERGLASS

info@vpcfiber.com
10478 Ridge Road
Medina, New York 14103

TITLE: WICHITA KANSAS STORM DRAIN COVER		
SIZE B	DWG. NO. VPC-WKS-2X2	REV -
SCALE:	WEIGHT:	SHEET 1 OF 1